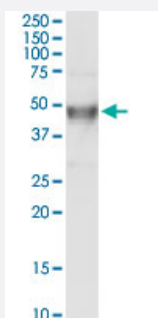


MAP2K4 (Human) IP-WB Antibody Pair

Catalog # H00006416-PW2

Size 1 Set

Applications



Immunoprecipitation of MAP2K4 transfected lysate using rabbit polyclonal anti-MAP2K4 and Protein A Magnetic Bead ([U0007](#)), and immunoblotted with mouse purified polyclonal anti-MAP2K4.

Specification

| | |
|--------------------------------|---|
| Product Description | This IP-WB antibody pair set comes with one antibody for immunoprecipitation and another to detect the precipitated protein in western blot. |
| Reactivity | Human |
| Quality Control Testing | Immunoprecipitation-Western Blot (IP-WB) Immunoprecipitation of MAP2K4 transfected lysate using rabbit polyclonal anti-MAP2K4 and Protein A Magnetic Bead (U0007), and immunoblotted with mouse purified polyclonal anti-MAP2K4. |
| Supplied Product | Antibody pair set content: 1. Antibody pair for IP: rabbit polyclonal anti-MAP2K4 (300 ul) 2. Antibody pair for WB: mouse purified polyclonal anti-MAP2K4 (50 ug) |
| Storage Instruction | Store reagents of the antibody pair set at -20°C or lower. Please aliquot to avoid repeated freeze thaw cycle. Reagents should be returned to -20°C storage immediately after use. |

Applications

- Immunoprecipitation-Western Blot

[Protocol Download](#)

Gene Info — MAP2K4

Entrez GeneID [6416](#)

Gene Name MAP2K4

Gene Alias JNKK, JNKK1, MAPKK4, MEK4, MKK4, PRKMK4, SEK1, SERK1

Gene Description mitogen-activated protein kinase kinase 4

Omim ID [601335](#)

Gene Ontology [Hyperlink](#)

Gene Summary This gene encodes a dual specificity protein kinase that belongs to the Ser/Thr protein kinase family. This kinase is a direct activator of MAP kinases in response to various environmental stresses or mitogenic stimuli. It has been shown to activate MAPK8/JNK1, MAPK9/JNK2, and MAPK14/p38, but not MAPK1/ERK2 or MAPK3/ERK3. This kinase is phosphorylated, and thus activated by MAP3K1/MEKK. The knockout studies in mice suggested the roles of this kinase in mediating survival signal in T cell development, as well as in the organogenesis of liver. [provided by RefSeq]

Other Designations JNK activating kinase 1|JNK-activated kinase 1|MAP kinase kinase 4|MAPK/ERK kinase 4|SAPK/ERK kinase 1|c-Jun N-terminal kinase kinase 1|dual specificity mitogen-activated protein kinase 4

Pathway

- [Epithelial cell signaling in Helicobacter pylori infection](#)
- [ErbB signaling pathway](#)
- [Fc epsilon RI signaling pathway](#)
- [GnRH signaling pathway](#)
- [MAPK signaling pathway](#)
- [Toll-like receptor signaling pathway](#)

Disease

- [Colorectal Neoplasms](#)
- [Genetic Predisposition to Disease](#)
- [Lung Neoplasms](#)

- [Pancreatic cancer](#)
- [Pancreatic Neoplasms](#)