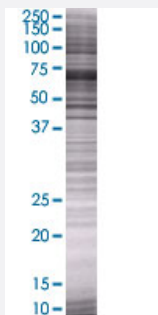


SEMG2 293T Cell Transient Overexpression Lysate(Denatured)

Catalog # H00006407-T01

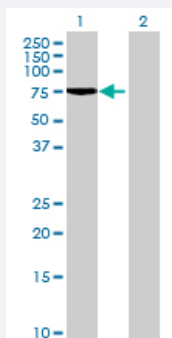
Size 100 uL

Applications



SDS-PAGE Gel

SEMG2 transfected lysate.



Western Blot

Lane 1: SEMG2 transfected lysate (64.13 KDa)

Lane 2: Non-transfected lysate.

Specification

Transfected Cell Line	293T
Plasmid	pCMV-SEMG2 full-length
Host	Human
Theoretical MW (kDa)	64.13
Quality Control Testing	<p>Transient overexpression cell lysate was tested with Anti-SEMG2 antibody (H00006407-B01) by Western Blots.</p> <p>SDS-PAGE Gel</p> <p>SEMG2 transfected lysate.</p> <p>Western Blot</p> <p>Lane 1: SEMG2 transfected lysate (64.13 KDa)</p> <p>Lane 2: Non-transfected lysate.</p>

Storage Buffer

1X Sample Buffer (50 mM Tris-HCl, 2% SDS, 10% glycerol, 300 mM 2-mercaptoethanol, 0.01% Bromophenol blue)

Storage Instruction

Store at -80°C. Aliquot to avoid repeated freezing and thawing.

Applications

- Western Blot

Gene Info — SEMG2

Entrez GeneID[6407](#)**GeneBank Accession#**[BC070306.1](#)**Protein Accession#**[AAH70306.1](#)**Gene Name**

SEMG2

Gene Alias

SGII

Gene Description

semenogelin II

Omim ID[182141](#)**Gene Ontology**[Hyperlink](#)**Gene Summary**

The secreted protein encoded by this gene is involved in the formation of a gel matrix that encase ejaculated spermatozoa. Proteolysis by the prostate-specific antigen (PSA) breaks down the gel matrix and allows the spermatozoa to move more freely. The encoded protein is found in lesser abundance than a similar semenogelin protein. The genes encoding these two semenogelin proteins are found in a cluster on chromosome 20. [provided by RefSeq]

Other Designations

OTTHUMP00000031099|Semenogelin 2