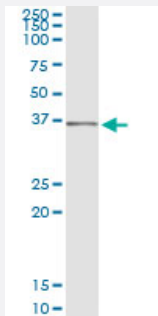


SEC13 (Human) IP-WB Antibody Pair

Catalog # H00006396-PW1

Size 1 Set

Applications



Immunoprecipitation of SEC13 transfected lysate using mouse monoclonal anti-SEC13 and Protein A Magnetic Bead ([U0007](#)), and immunoblotted with rabbit polyclonal anti-SEC13.

Specification

Product Description	This IP-WB antibody pair set comes with one antibody for immunoprecipitation and another to detect the precipitated protein in western blot.
Reactivity	Human
Quality Control Testing	Immunoprecipitation-Western Blot (IP-WB) Immunoprecipitation of SEC13 transfected lysate using mouse monoclonal anti-SEC13 and Protein A Magnetic Bead (U0007), and immunoblotted with rabbit polyclonal anti-SEC13.
Supplied Product	Antibody pair set content: 1. Antibody pair for IP: mouse monoclonal anti-SEC13 (300 ug) 2. Antibody pair for WB: rabbit polyclonal anti-SEC13 (50 ul)
Storage Instruction	Store reagents of the antibody pair set at -20°C or lower. Please aliquot to avoid repeated freeze thaw cycle. Reagents should be returned to -20°C storage immediately after use.

Applications

- Immunoprecipitation-Western Blot

[Protocol Download](#)

Gene Info — SEC13

Entrez GeneID	6396
Gene Name	SEC13
Gene Alias	D3S1231E, SEC13L1, SEC13R, npp-20
Gene Description	SEC13 homolog (S. cerevisiae)
Omim ID	600152
Gene Ontology	Hyperlink
Gene Summary	The protein encoded by this gene belongs to the SEC13 family of WD-repeat proteins. It is a constituent of the endoplasmic reticulum and the nuclear pore complex. It has similarity to the yeast SEC13 protein, which is required for vesicle biogenesis from endoplasmic reticulum during the transport of proteins. Multiple alternatively spliced transcript variants have been found. [provided by RefSeq]
Other Designations	SEC13 protein SEC13-like 1 isoform SEC13-related protein

Disease

- [Kidney Failure](#)