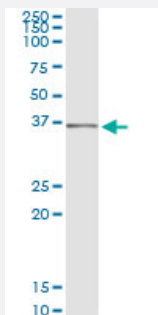


# SEC13 monoclonal antibody (M02), clone 1G7

Catalog # H00006396-M02

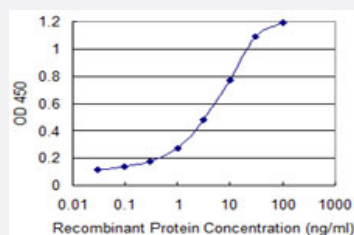
Size 100 ug

## Applications



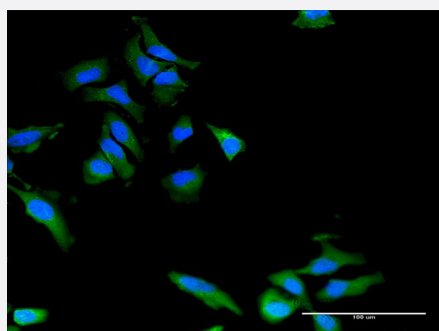
### Immunoprecipitation

Immunoprecipitation of SEC13 transfected lysate using anti-SEC13 monoclonal antibody and Protein A Magnetic Bead, and immunoblotted with SEC13 MaxPab rabbit polyclonal antibody.



### Sandwich ELISA (Recombinant protein)

Detection limit for recombinant GST tagged SEC13 is 0.03 ng/ml as a capture antibody.



### Immunofluorescence

Immunofluorescence of monoclonal antibody to SEC13 on HeLa cell . [antibody concentration 40 ug/ml]

## Specification

### Product Description

Mouse monoclonal antibody raised against a partial recombinant SEC13.

Immunogen	SEC13 (NP_109598, 226 a.a. ~ 324 a.a) partial recombinant protein with GST tag. MW of the GST tag alone is 26 KDa.
Sequence	SIGLPTSTIASCSQDGRVFWTCDDASSNTWSPKLLHKFNDVVWHVSWSTITANILAVSGGDNKVTLWKESVDGQWVCISDVNKGQGSVSASVTEGQQNE
Host	Mouse
Reactivity	Human
Isotype	IgG2a Kappa
Quality Control Testing	Antibody Reactive Against Recombinant Protein.
Storage Buffer	In 1x PBS, pH 7.4
Storage Instruction	Store at -20°C or lower. Aliquot to avoid repeated freezing and thawing.

## Applications

- Immunoprecipitation

Immunoprecipitation of SEC13 transfected lysate using anti-SEC13 monoclonal antibody and Protein A Magnetic Bead, and immunoblotted with SEC13 MaxPab rabbit polyclonal antibody.

[Protocol Download](#)

- Sandwich ELISA (Recombinant protein)

Detection limit for recombinant GST tagged SEC13 is 0.03 ng/ml as a capture antibody.

[Protocol Download](#)

- ELISA

- Immunofluorescence

Immunofluorescence of monoclonal antibody to SEC13 on HeLa cell . [antibody concentration 40 ug/ml]

## Gene Info — SEC13

Entrez GeneID	<a href="#">6396</a>
GeneBank Accession#	<a href="#">NM_030673</a>
Protein Accession#	<a href="#">NP_109598</a>

Gene Name	SEC13
Gene Alias	D3S1231E, SEC13L1, SEC13R, npp-20
Gene Description	SEC13 homolog (S. cerevisiae)
Omim ID	<a href="#">600152</a>
Gene Ontology	<a href="#">Hyperlink</a>
Gene Summary	The protein encoded by this gene belongs to the SEC13 family of WD-repeat proteins. It is a constituent of the endoplasmic reticulum and the nuclear pore complex. It has similarity to the yeast SEC13 protein, which is required for vesicle biogenesis from endoplasmic reticulum during the transport of proteins. Multiple alternatively spliced transcript variants have been found. [provided by RefSeq]
Other Designations	SEC13 protein SEC13-like 1 isoform SEC13-related protein

## Disease

- [Kidney Failure](#)