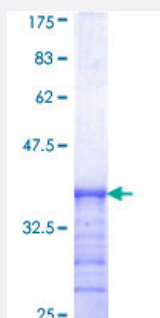


SDCBP (Human) Recombinant Protein (Q01)

Catalog # H00006386-Q01

Size 25 ug, 10 ug

Applications



Specification

Product Description	Human SDCBP partial ORF (NP_005616, 1 a.a. - 100 a.a.) recombinant protein with GST-tag at N-terminal.
Sequence	MSLYPSLEDLKVDKVIQAQTAFSANPANPAIASEASAPIPHDGNLYPRLYPELSQYMGLSLNEEEIR ANVAVVSGAPLQGQLVARPSSINYMVAPVTGND
Host	Wheat Germ (in vitro)
Theoretical MW (kDa)	36.74
Preparation Method	in vitro wheat germ expression system
Purification	Glutathione Sepharose 4 Fast Flow
Quality Control Testing	12.5% SDS-PAGE Stained with Coomassie Blue.
Storage Buffer	50 mM Tris-HCl, 10 mM reduced Glutathione, pH=8.0 in the elution buffer.
Storage Instruction	Store at -80°C. Aliquot to avoid repeated freezing and thawing.
Note	Best use within three months from the date of receipt of this protein.

Applications

- Enzyme-linked Immunoabsorbent Assay
- Western Blot (Recombinant protein)
- Antibody Production
- Protein Array

Gene Info — SDCBP

Entrez GeneID [6386](#)

GeneBank Accession# [NM_005625](#)

Protein Accession# [NP_005616](#)

Gene Name SDCBP

Gene Alias MDA-9, ST1, SYCL, TACIP18

Gene Description syndecan binding protein (syntenin)

Omim ID [602217](#)

Gene Ontology [Hyperlink](#)

Gene Summary The protein encoded by this gene was initially identified as a molecule linking syndecan-mediated signaling to the cytoskeleton. The syntenin protein contains tandemly repeated PDZ domains that bind the cytoplasmic, C-terminal domains of a variety of transmembrane proteins. This protein may also affect cytoskeletal-membrane organization, cell adhesion, protein trafficking, and the activation of transcription factors. The protein is primarily localized to membrane-associated adherens junctions and focal adhesions but is also found at the endoplasmic reticulum and nucleus. Alternative splicing results in multiple transcript variants encoding different isoforms. [provided by RefSeq]

Other Designations melanoma differentiation associated protein-9|pro-TGF-alpha cytoplasmic domain-interacting protein 18|scaffold protein Pbp1|syntenin