

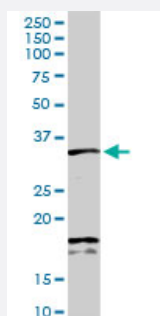
MaxPab®

SDCBP MaxPab rabbit polyclonal antibody (D01)

Catalog # H00006386-D01

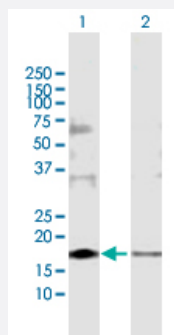
Size 100 uL

Applications



Western Blot (Tissue lysate)

SDCBP MaxPab rabbit polyclonal antibody. Western Blot analysis of SDCBP expression in mouse liver.

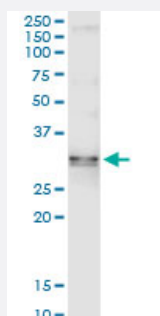


Western Blot (Transfected lysate)

Western Blot analysis of SDCBP expression in transfected 293T cell line ([H00006386-T02](#)) by SDCBP MaxPab polyclonal antibody.

Lane 1: SDCBP transfected lysate(32.40 KDa).

Lane 2: Non-transfected lysate.



Immunoprecipitation

Immunoprecipitation of SDCBP transfected lysate using anti-SDCBP MaxPab rabbit polyclonal antibody and Protein A Magnetic Bead, and immunoblotted with SDCBP purified MaxPab mouse polyclonal antibody (B01P) ([H00006386-B01P](#)).

Specification

Product Description

Rabbit polyclonal antibody raised against a full-length human SDCBP protein.

Immunogen	SDCBP (NP_001007068.1, 1 a.a. ~ 298 a.a) full-length human protein.
Sequence	MSLYPSLEDLKVVDKVIQAQTAFSANPANPAILSEASAPIPHDGNLYPRLYPELSQYMGLSLNEEEIR ANVAVVSGAPLQGQLVARPSSINYMVAPVTGNDVGIRRAEIKQGIREVILCKDQDGKIGLRRLKSIDN GIFVQLVQANSPASLVGLRFGDQVLQINGENCAGWSSDKAHKVLKQAFGEKITMTIRDRPFERTIT MHKDSTGHVGFIFKNGKITSVKDSSAARNGLL TEHNICEINGQNVIGLKDSQIADILSTSGTVVTTIM PAFIFEHIKRMAPSIMKSLMDHTIPEV
Host	Rabbit
Reactivity	Human, Mouse
Quality Control Testing	Antibody reactive against mammalian transfected lysate.
Storage Buffer	No additive
Storage Instruction	Store at -20°C or lower. Aliquot to avoid repeated freezing and thawing.

Applications

- Western Blot (Tissue lysate)

SDCBP MaxPab rabbit polyclonal antibody. Western Blot analysis of SDCBP expression in mouse liver.

[Protocol Download](#)

- Western Blot (Transfected lysate)

Western Blot analysis of SDCBP expression in transfected 293T cell line ([H00006386-T02](#)) by SDCBP MaxPab polyclonal antibody.

Lane 1: SDCBP transfected lysate(32.40 KDa).

Lane 2: Non-transfected lysate.

[Protocol Download](#)

- Immunoprecipitation

Immunoprecipitation of SDCBP transfected lysate using anti-SDCBP MaxPab rabbit polyclonal antibody and Protein A Magnetic Bead, and immunoblotted with SDCBP purified MaxPab mouse polyclonal antibody (B01P) ([H00006386-B01P](#)).

[Protocol Download](#)

Gene Info — SDCBP

Entrez GeneID

[6386](#)

GeneBank Accession#

[NM_001007067](#)

Protein Accession#	NP_001007068.1
Gene Name	SDCBP
Gene Alias	MDA-9, ST1, SYCL, TACIP18
Gene Description	syndecan binding protein (syntenin)
Omim ID	602217
Gene Ontology	Hyperlink
Gene Summary	<p>The protein encoded by this gene was initially identified as a molecule linking syndecan-mediated signaling to the cytoskeleton. The syntenin protein contains tandemly repeated PDZ domains that bind the cytoplasmic, C-terminal domains of a variety of transmembrane proteins. This protein may also affect cytoskeletal-membrane organization, cell adhesion, protein trafficking, and the activation of transcription factors. The protein is primarily localized to membrane-associated adherens junctions and focal adhesions but is also found at the endoplasmic reticulum and nucleus. Alternative splicing results in multiple transcript variants encoding different isoforms. [provided by RefSeq</p>
Other Designations	melanoma differentiation associated protein-9 pro-TGF-alpha cytoplasmic domain-interacting protein 18 scaffold protein Pbp1 syntenin