

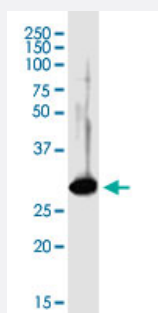
MaxPab®

SDCBP purified MaxPab mouse polyclonal antibody (B01P)

Catalog # H00006386-B01P

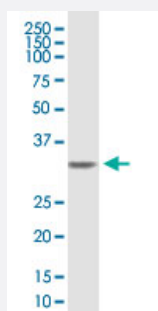
Size 50 ug

Applications



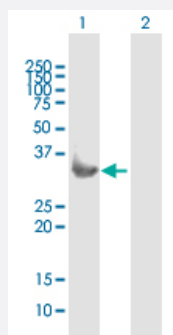
Western Blot (Tissue lysate)

SDCBP MaxPab polyclonal antibody. Western Blot analysis of SDCBP expression in human pancreas.



Western Blot (Cell lysate)

SDCBP MaxPab polyclonal antibody. Western Blot analysis of SDCBP expression in A-549.

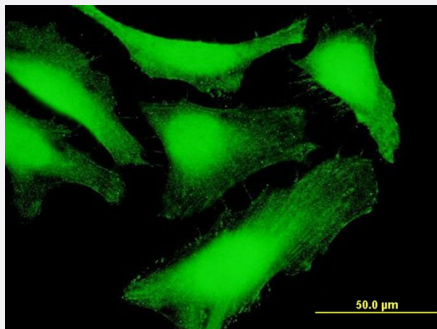


Western Blot (Transfected lysate)

Western Blot analysis of SDCBP expression in transfected 293T cell line ([H00006386-T01](#)) by SDCBP MaxPab polyclonal antibody.

Lane 1: SDCBP transfected lysate(32.78 KDa).

Lane 2: Non-transfected lysate.



Immunofluorescence

Immunofluorescence of purified MaxPab antibody to SDCBP on HeLa cell.
[antibody concentration 10 ug/ml]

Specification

Product Description	Mouse polyclonal antibody raised against a full-length human SDCBP protein.
Immunogen	SDCBP (NP_001007068.1, 1 a.a. ~ 298 a.a) full-length human protein.
Sequence	MSLYPSLEDLKVDKVIQAQTAFSANPANPAILSEASAPIPHDGNLYPRLYPELSQYMGLSLNEEEIR ANVAVVSGAPLQGQLVARPSSINYMVAPVTGNDVGIRRAEIKQGIREVILCKDQDGKIGRLKSIDN GIFVQLVQANSPASLVGLRFGDQVLQINGENCAGWSSDKAHKVLKQAFGEKITMTIRDRPFERTIT MHKDSTGHVGFIFKNGKITSVKDSSAARNGLLTEHNICEINGQNVIGLKDSQIADILSTSGTVVTTITM PAFIFEHIIKRMAPSIMKSLMDHTIPEV
Host	Mouse
Reactivity	Human
Quality Control Testing	Antibody reactive against mammalian transfected lysate.
Storage Buffer	In 1x PBS, pH 7.4
Storage Instruction	Store at -20°C or lower. Aliquot to avoid repeated freezing and thawing.

Applications

● Western Blot (Tissue lysate)

SDCBP MaxPab polyclonal antibody. Western Blot analysis of SDCBP expression in human pancreas.

[Protocol Download](#)

● Western Blot (Cell lysate)

SDCBP MaxPab polyclonal antibody. Western Blot analysis of SDCBP expression in A-549.

[Protocol Download](#)

- Western Blot (Transfected lysate)

Western Blot analysis of SDCBP expression in transfected 293T cell line ([H00006386-T01](#)) by SDCBP MaxPab polyclonal antibody.

Lane 1: SDCBP transfected lysate(32.78 KDa).

Lane 2: Non-transfected lysate.

[Protocol Download](#)

- Immunofluorescence

Immunofluorescence of purified MaxPab antibody to SDCBP on HeLa cell. [antibody concentration 10 ug/ml]

Gene Info — SDCBP

Entrez GeneID [6386](#)

GeneBank Accession# [NM_001007067](#)

Protein Accession# [NP_001007068.1](#)

Gene Name SDCBP

Gene Alias MDA-9, ST1, SYCL, TACIP18

Gene Description syndecan binding protein (syntenin)

Omim ID [602217](#)

Gene Ontology [Hyperlink](#)

Gene Summary The protein encoded by this gene was initially identified as a molecule linking syndecan-mediated signaling to the cytoskeleton. The syntenin protein contains tandemly repeated PDZ domains that bind the cytoplasmic, C-terminal domains of a variety of transmembrane proteins. This protein may also affect cytoskeletal-membrane organization, cell adhesion, protein trafficking, and the activation of transcription factors. The protein is primarily localized to membrane-associated adherens junctions and focal adhesions but is also found at the endoplasmic reticulum and nucleus. Alternative splicing results in multiple transcript variants encoding different isoforms. [provided by RefSeq]

Other Designations melanoma differentiation associated protein-9|pro-TGF-alpha cytoplasmic domain-interacting protein 18|scaffold protein Pbp1|syntenin

Publication Reference

- [Differential protein profiling of renal cell carcinoma urinary exosomes.](#)

Raimondo F, Morosi L, Corbetta S, Chinello C, Brambilla P, Della Mina P, Villa A, Albo G, Battaglia C, Bosari S, Magni F, Pitto M.

Molecular BioSystems 2013 Jun; 9(6):1220.

Application: WB, Human, Human urine samples