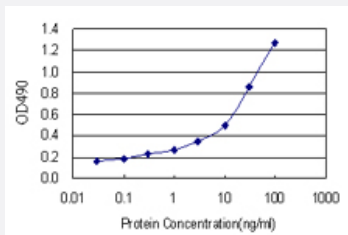


SDC4 (Human) Matched Antibody Pair

Catalog # H00006385-AP22

Size 1 Set

Applications



Sandwich ELISA detection sensitivity ranging from 0.1 ng/ml to 100 ng/ml.

Specification

Product Description	This antibody pair set comes with a matched antibody pair to detect and quantify the protein level of human SDC4.
Reactivity	Human
Interspecies Antigen Sequence	Mouse (78%); Rat (78%)
Quality Control Testing	Standard curve using recombinant protein (H00006385-P02) as an analyte. Sandwich ELISA detection sensitivity ranging from 0.1 ng/ml to 100 ng/ml.
Supplied Product	Antibody pair set content: 1. Capture antibody: rabbit MaxPab® affinity purified polyclonal anti-SDC4 (100 ug) 2. Detection antibody: mouse purified polyclonal anti-SDC4 (20 ug) *Reagents are sufficient for at least 1-2 x 96 well plates using recommended protocols.
Storage Instruction	Store reagents of the antibody pair set at -20°C or lower. Please aliquot to avoid repeated freeze thaw cycle. Reagents should be returned to -20°C storage immediately after use.

Applications

- ELISA Pair (Recombinant protein)

[Protocol Download](#)

Gene Info — SDC4

Entrez GeneID	6385
Gene Name	SDC4
Gene Alias	MGC22217, SYND4
Gene Description	syndecan 4
Omim ID	600017
Gene Ontology	Hyperlink
Gene Summary	The protein encoded by this gene is a transmembrane (type I) heparan sulfate proteoglycan that functions as a receptor in intracellular signaling. The encoded protein is found as a homodimer and is a member of the syndecan proteoglycan family. This gene is found on chromosome 20, while a pseudogene has been found on chromosome 22. [provided by RefSeq]
Other Designations	OTTHUMP00000031788 amphiglycan ryudocan amphiglycan ryudocan core protein syndecan 4 (amphiglycan, ryudocan) syndecan proteoglycan 4

Pathway

- [Cell adhesion molecules \(CAMs\)](#)
- [ECM-receptor interaction](#)

Disease

- [Cardiovascular Diseases](#)
- [Coronary Artery Disease](#)
- [Diabetes Mellitus](#)
- [Edema](#)
- [Genetic Predisposition to Disease](#)

- [Varicose Ulcer](#)