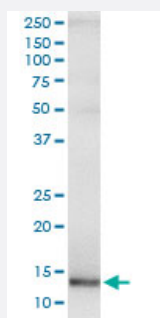


CCL23 (Human) IP-WB Antibody Pair

Catalog # H00006368-PW2

Size 1 Set

Applications



Immunoprecipitation of CCL23 transfected lysate using rabbit polyclonal anti-CCL23 and Protein A Magnetic Bead ([U0007](#)), and immunoblotted with mouse purified polyclonal anti-CCL23.

Specification

Product Description	This IP-WB antibody pair set comes with one antibody for immunoprecipitation and another to detect the precipitated protein in western blot.
Reactivity	Human
Quality Control Testing	Immunoprecipitation-Western Blot (IP-WB) Immunoprecipitation of CCL23 transfected lysate using rabbit polyclonal anti-CCL23 and Protein A Magnetic Bead (U0007), and immunoblotted with mouse purified polyclonal anti-CCL23.
Supplied Product	Antibody pair set content: 1. Antibody pair for IP: rabbit polyclonal anti-CCL23 (300 ul) 2. Antibody pair for WB: mouse purified polyclonal anti-CCL23 (50 ug)
Storage Instruction	Store reagents of the antibody pair set at -20°C or lower. Please aliquot to avoid repeated freeze thaw cycle. Reagents should be returned to -20°C storage immediately after use.

Applications

- Immunoprecipitation-Western Blot

[Protocol Download](#)

Gene Info — CCL23

Entrez GeneID [6368](#)

Gene Name CCL23

Gene Alias CK-BETA-8, CKb8, Ckb-8, Ckb-8-1, MIP-3, MIP3, MPIF-1, SCYA23

Gene Description chemokine (C-C motif) ligand 23

Omim ID [602494](#)

Gene Ontology [Hyperlink](#)

Gene Summary This gene is one of several cytokine genes clustered on the q-arm of chromosome 17. Cytokines are a family of secreted proteins involved in immunoregulatory and inflammatory processes. The CC cytokines are proteins characterized by two adjacent cysteines. The cytokine encoded by this gene displays chemotactic activity on resting T lymphocytes and monocytes, lower activity on neutrophils and no activity on activated T lymphocytes. The protein is also a strong suppressor of colony formation by a multipotential hematopoietic progenitor cell line. In addition, the product of this gene is a potent agonist at CC chemokine receptor 1. Two alternatively spliced variants encoding different active isoforms have been identified. [provided by RefSeq]

Other Designations C6 beta-chemokine|OTTHUMP00000163948|hmrp-2a|macrophage inflammatory protein 3|myeloid progenitor inhibitory factor 1|small inducible cytokine A23|small inducible cytokine subfamily A (Cys-Cys), member 23

Pathway

- [Chemokine signaling pathway](#)
- [Cytokine-cytokine receptor interaction](#)

Disease

- [Asthma](#)
- [Bronchiolitis](#)
- [Genetic Predisposition to Disease](#)
- [HIV Infections](#)
- [Infant](#)
- [Respiratory Syncytial Virus Infections](#)