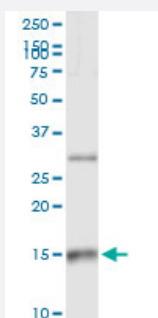


CCL21 (Human) IP-WB Antibody Pair

Catalog # H00006366-PW1

Size 1 Set

Applications



Immunoprecipitation of CCL21 transfected lysate using rabbit polyclonal anti-CCL21 and Protein A Magnetic Bead ([U0007](#)), and immunoblotted with mouse polyclonal anti-CCL21.

Specification

Product Description	This IP-WB antibody pair set comes with one antibody for immunoprecipitation and another to detect the precipitated protein in western blot.
Reactivity	Human
Quality Control Testing	Immunoprecipitation-Western Blot (IP-WB) Immunoprecipitation of CCL21 transfected lysate using rabbit polyclonal anti-CCL21 and Protein A Magnetic Bead (U0007), and immunoblotted with mouse polyclonal anti-CCL21.
Supplied Product	Antibody pair set content: 1. Antibody pair for IP: rabbit polyclonal anti-CCL21 (300 ul) 2. Antibody pair for WB: mouse polyclonal anti-CCL21 (50 ul)
Storage Instruction	Store reagents of the antibody pair set at -20°C or lower. Please aliquot to avoid repeated freeze thaw cycle. Reagents should be returned to -20°C storage immediately after use.

Applications

- Immunoprecipitation-Western Blot

[Protocol Download](#)

Gene Info — CCL21

Entrez GeneID [6366](#)

Gene Name CCL21

Gene Alias 6Ckine, CKb9, ECL, MGC34555, SCYA21, SLC, TCA4

Gene Description chemokine (C-C motif) ligand 21

Omim ID [602737](#)

Gene Ontology [Hyperlink](#)

Gene Summary

This gene is one of several CC cytokine genes clustered on the p-arm of chromosome 9. Cytokines are a family of secreted proteins involved in immunoregulatory and inflammatory processes. The CC cytokines are proteins characterized by two adjacent cysteines. Similar to other chemokines the protein encoded by this gene inhibits hemopoiesis and stimulates chemotaxis. This protein is chemotactic in vitro for thymocytes and activated T cells, but not for B cells, macrophages, or neutrophils. The cytokine encoded by this gene may also play a role in mediating homing of lymphocytes to secondary lymphoid organs. It is a high affinity functional ligand for chemokine receptor 7 (CCR7) that is expressed on T and B lymphocytes and a known receptor for another member of the cytokine family (small inducible cytokine A19). [provided by RefSeq]

Other Designations

Efficient Chemoattractant for Lymphocytes|OTTHUMP00000000526|OTTHUMP00000000527|OTTHUMP000000021304|beta chemokine exodus-2|exodus-2|secondary lymphoid tissue chemokine|small inducible cytokine A21|small inducible cytokine subfamily A (Cys-Cys), member 21

Pathway

- [Chemokine signaling pathway](#)
- [Cytokine-cytokine receptor interaction](#)

Disease

- [Arthritis](#)
- [Autoimmune Diseases](#)
- [Cardiovascular Diseases](#)
- [Diabetes Mellitus](#)
- [Disease Progression](#)

- [Endometriosis](#)
- [Genetic Predisposition to Disease](#)
- [Inflammation](#)
- [Wegener Granulomatosis](#)