

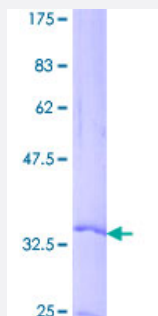
Full-Length

## CCL19 (Human) Recombinant Protein (P02)

Catalog # H00006363-P02

Size 25 ug, 10 ug

### Applications



### Specification

Product Description	Human CCL19 full-length ORF ( NP_006265.1, 1 a.a. - 98 a.a.) recombinant protein with GST-tag at N-terminal.
Sequence	MALLLALSLLVLWTSPAPTLSGTND AEDCCLSVTQKPIPGYVRNHFHYLLIKDGCRVPAVVFTTLRG RQLCAPPDQPWVERIIQRLQRTSAKMKRRSS
Host	Wheat Germ (in vitro)
Theoretical MW (kDa)	37.4
Preparation Method	<a href="#">in vitro wheat germ expression system</a>
Purification	Glutathione Sepharose 4 Fast Flow
Quality Control Testing	12.5% SDS-PAGE Stained with Coomassie Blue.
Storage Buffer	50 mM Tris-HCl, 10 mM reduced Glutathione, pH=8.0 in the elution buffer.
Storage Instruction	Store at -80°C. Aliquot to avoid repeated freezing and thawing.
Note	Best use within three months from the date of receipt of this protein.

## Applications

- Enzyme-linked Immunoabsorbent Assay
- Western Blot (Recombinant protein)
- Antibody Production
- Protein Array

## Gene Info — CCL19

Entrez GeneID	<a href="#">6363</a>
GeneBank Accession#	<a href="#">NM_006274.2</a>
Protein Accession#	<a href="#">NP_006265.1</a>
Gene Name	CCL19
Gene Alias	CKb11, ELC, MGC34433, MIP-3b, MIP3B, SCYA19
Gene Description	chemokine (C-C motif) ligand 19
Omim ID	<a href="#">602227</a>
Gene Ontology	<a href="#">Hyperlink</a>
Gene Summary	This gene is one of several CC cytokine genes clustered on the p-arm of chromosome 9. Cytokines are a family of secreted proteins involved in immunoregulatory and inflammatory processes. The CC cytokines are proteins characterized by two adjacent cysteines. The cytokine encoded by this gene may play a role in normal lymphocyte recirculation and homing. It also plays an important role in trafficking of T cells in thymus, and in T cell and B cell migration to secondary lymphoid organs. It specifically binds to chemokine receptor CCR7. [provided by RefSeq]
Other Designations	CC chemokine ligand 19 CK beta-11 EBI1-ligand chemokine OTTHUMP00000000531 OTTHUMP000000021295 beta chemokine exodus-3 exodus-3 macrophage inflammatory protein 3-beta small inducible cytokine A19 small inducible cytokine subfamily A (Cys-Cys), member 19

## Pathway

- [Chemokine signaling pathway](#)

- [Cytokine-cytokine receptor interaction](#)

## Disease

- [Asthma](#)
- [Bronchiolitis](#)
- [Genetic Predisposition to Disease](#)
- [Infant](#)
- [Respiratory Syncytial Virus Infections](#)