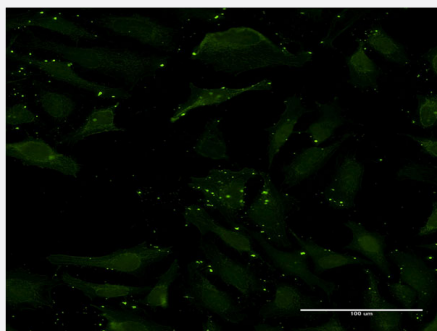


CCL17 monoclonal antibody (M02), clone 1F11

Catalog # H00006361-M02

Size 100 ug

Applications



Immunofluorescence

Immunofluorescence of monoclonal antibody to CCL17 on HeLa cell . [antibody concentration 10 ug/ml]

Specification

Product Description	Mouse monoclonal antibody raised against a partial recombinant CCL17.
Immunogen	CCL17 (NP_002978, 24 a.a. ~ 94 a.a) partial recombinant protein with GST tag. MW of the GST tag alone is 26 KDa.
Sequence	ARGTNVGRECCLEYFKGAIPRLKLTWYQTSEDCSRDAVFVTVQGGAICSDPNNKRVKNAVLYQLERS
Host	Mouse
Reactivity	Human
Interspecies Antigen Sequence	Mouse (67); Rat (67)
Isotype	IgG2b Kappa
Quality Control Testing	Antibody Reactive Against Recombinant Protein.
Storage Buffer	In 1x PBS, pH 7.4
Storage Instruction	Store at -20°C or lower. Aliquot to avoid repeated freezing and thawing.

Applications

- ELISA
- Immunofluorescence

Immunofluorescence of monoclonal antibody to CCL17 on HeLa cell . [antibody concentration 10 ug/ml]

Gene Info — CCL17

Entrez GeneID	6361
GeneBank Accession#	NM_002987
Protein Accession#	NP_002978
Gene Name	CCL17
Gene Alias	A-152E5.3, ABCD-2, MGC138271, MGC138273, SCYA17, TARC
Gene Description	chemokine (C-C motif) ligand 17
Omim ID	601520
Gene Ontology	Hyperlink
Gene Summary	This gene is one of several Cys-Cys (CC) cytokine genes clustered on the q arm of chromosome 16. Cytokines are a family of secreted proteins involved in immunoregulatory and inflammatory processes. The CC cytokines are proteins characterized by two adjacent cysteines. The cytokine encoded by this gene displays chemotactic activity for T lymphocytes, but not monocytes or granulocytes. The product of this gene binds to chemokine receptors CCR4 and CCR8. This chemokine plays important roles in T cell development in thymus as well as in trafficking and activation of mature T cells. [provided by RefSeq]
Other Designations	OTTHUMP00000164673 T cell-directed CC chemokine small inducible cytokine A17 small inducible cytokine subfamily A (Cys-Cys), member 17 thymus and activation-regulated chemokine

Pathway

- [Chemokine signaling pathway](#)
- [Cytokine-cytokine receptor interaction](#)

Disease

- [Asthma](#)
- [Bronchiolitis](#)
- [Dermatitis](#)
- [Eosinophilia](#)
- [Genetic Predisposition to Disease](#)
- [Infant](#)
- [Multiple Sclerosis](#)
- [Respiratory Syncytial Virus Infections](#)