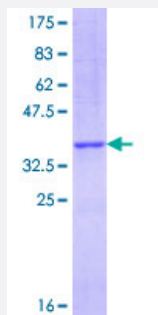


# CCL16 (Human) Recombinant Protein (Q01)

Catalog # H00006360-Q01

Size 25 ug, 10 ug

## Applications



## Specification

<b>Product Description</b>	Human CCL16 partial ORF ( NP_004581.1, 25 a.a. - 120 a.a.) recombinant protein with GST-tag at N-terminal.
<b>Sequence</b>	PKVPEWVNTPTSCCLKYYEKVLPRLVVG YRKALNCHLPAIIFVTKRNREVCTNPND DWVQEYIKD PNLPLLPTRNLS TVKIITAKNGQPQLLSQ
<b>Host</b>	Wheat Germ (in vitro)
<b>Theoretical MW (kDa)</b>	36.3
<b>Preparation Method</b>	<a href="#">in vitro wheat germ expression system</a>
<b>Purification</b>	Glutathione Sepharose 4 Fast Flow
<b>Quality Control Testing</b>	12.5% SDS-PAGE Stained with Coomassie Blue.
<b>Storage Buffer</b>	50 mM Tris-HCl, 10 mM reduced Glutathione, pH=8.0 in the elution buffer.
<b>Storage Instruction</b>	Store at -80°C. Aliquot to avoid repeated freezing and thawing.
<b>Note</b>	Best use within three months from the date of receipt of this protein.

## Applications

- Enzyme-linked Immunoabsorbent Assay
- Western Blot (Recombinant protein)
- Antibody Production
- Protein Array

## Gene Info — CCL16

Entrez GeneID	<a href="#">6360</a>
GeneBank Accession#	<a href="#">NM_004590</a>
Protein Accession#	<a href="#">NP_004581.1</a>
Gene Name	CCL16
Gene Alias	CKb12, HCC-4, ILINCK, LCC-1, LEC, LMC, MGC117051, Mtn-1, NCC-4, NCC4, SCYA16, SCY L4
Gene Description	chemokine (C-C motif) ligand 16
Omim ID	<a href="#">601394</a>
Gene Ontology	<a href="#">Hyperlink</a>

**Gene Summary** This gene is one of several cytokine genes clustered on the q-arm of chromosome 17. Cytokines are a family of secreted proteins involved in immunoregulatory and inflammatory processes. The CC cytokines are proteins characterized by two adjacent cysteines. The cytokine encoded by this gene displays chemotactic activity for lymphocytes and monocytes but not for neutrophils. This cytokine also shows a potent myelosuppressive activity and suppresses proliferation of myeloid progenitor cells. The expression of this gene is upregulated by IL-10. [provided by RefSeq]

**Other Designations** IL-10-inducible chemokine|chemokine CC-4|chemokine LEC|liver CC chemokine-1|liver-expressed chemokine|lymphocyte and monocyte chemoattractant|monotactin-1|new CC chemokine 4|small inducible cytokine A16|small inducible cytokine subfamily A (Cys-Cys), memb

## Pathway

- [Chemokine signaling pathway](#)
- [Cytokine-cytokine receptor interaction](#)

## Disease

- [Asthma](#)
- [Bronchiolitis](#)
- [Genetic Predisposition to Disease](#)
- [Infant](#)
- [Leishmaniasis](#)
- [Respiratory Syncytial Virus Infections](#)