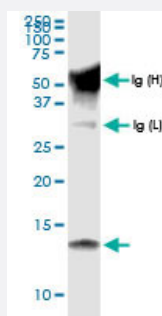


# CCL15 (Human) IP-WB Antibody Pair

Catalog # H00006359-PW1

Size 1 Set

## Applications



Immunoprecipitation of CCL15 transfected lysate using rabbit polyclonal anti-CCL15 and Protein A Magnetic Bead ([U0007](#)), and immunoblotted with rabbit polyclonal anti-CCL15.

## Specification

<b>Product Description</b>	This IP-WB antibody pair set comes with one antibody for immunoprecipitation and another to detect the precipitated protein in western blot.
<b>Reactivity</b>	Human
<b>Quality Control Testing</b>	Immunoprecipitation-Western Blot (IP-WB) Immunoprecipitation of CCL15 transfected lysate using rabbit polyclonal anti-CCL15 and Protein A Magnetic Bead ( <a href="#">U0007</a> ), and immunoblotted with rabbit polyclonal anti-CCL15.
<b>Supplied Product</b>	Antibody pair set content: 1. Antibody pair for IP: rabbit polyclonal anti-CCL15 (300 ul) 2. Antibody pair for WB: rabbit polyclonal anti-CCL15 (50 ul)
<b>Storage Instruction</b>	Store reagents of the antibody pair set at -20°C or lower. Please aliquot to avoid repeated freeze thaw cycle. Reagents should be returned to -20°C storage immediately after use.

## Applications

- Immunoprecipitation-Western Blot

[Protocol Download](#)

## Gene Info — CCL15

Entrez GeneID	<a href="#">6359</a>
Gene Name	CCL15
Gene Alias	HCC-2, HMRP-2B, LKN1, Lkn-1, MIP-1d, MIP-5, NCC-3, NCC3, SCYA15, SCYL3, SY15
Gene Description	chemokine (C-C motif) ligand 15
Omim ID	<a href="#">601393</a>
Gene Ontology	<a href="#">Hyperlink</a>
Gene Summary	<p>This gene, CCL15, is one of several CC cytokine genes clustered on 17q11.2. The CC cytokines are secreted proteins characterized by two adjacent cysteines. The cytokine encoded by this gene is chemotactic for T cells and monocytes and induces N-acetyl-beta-D-glucosaminidase release in monocytes. It induces changes in intracellular calcium concentration in monocytes and is thought to act through the CCR1 receptor. Read-through transcripts are expressed that include exons from the downstream cytokine gene CCL14, and are represented as GeneID: 348249. [provided by RefSeq]</p>
Other Designations	CC chemokine 3 MIP-1 delta OTTHUMP00000163955 chemokine CC-2 leukotactin 1 macrophage inflammatory protein 5 small inducible cytokine subfamily A (Cys-Cys), member 15

## Pathway

- [Chemokine signaling pathway](#)
- [Cytokine-cytokine receptor interaction](#)

## Disease

- [Asthma](#)
- [Bronchiolitis](#)
- [Genetic Predisposition to Disease](#)
- [Infant](#)
- [Respiratory Syncytial Virus Infections](#)
- [Tobacco Use Disorder](#)