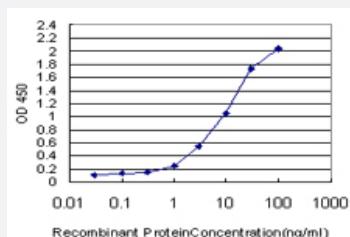


# CCL15 monoclonal antibody (M05), clone 3B1

Catalog # H00006359-M05

Size 100 ug

## Applications



### Sandwich ELISA (Recombinant protein)

Detection limit for recombinant GST tagged CCL15 is approximately 0.03ng/ml as a capture antibody.

## Specification

<b>Product Description</b>	Mouse monoclonal antibody raised against a partial recombinant CCL15.
<b>Immunogen</b>	CCL15 (NP_116741, 25 a.a. ~ 113 a.a) partial recombinant protein with GST tag. MW of the GST tag alone is 26 KDa.
<b>Sequence</b>	NDAETELMMSKLPLENPVVLNSFHFAADCCTSYISQSI PCSLMKSYFETSSECSKPGVIFLTKKGR QVCAKPSGPGVQDCMKKLKPYSI
<b>Host</b>	Mouse
<b>Reactivity</b>	Human
<b>Isotype</b>	IgG2a Kappa
<b>Quality Control Testing</b>	Antibody Reactive Against Recombinant Protein.
<b>Storage Buffer</b>	In 1x PBS, pH 7.4
<b>Storage Instruction</b>	Store at -20°C or lower. Aliquot to avoid repeated freezing and thawing.

## Applications

- Sandwich ELISA (Recombinant protein)

Detection limit for recombinant GST tagged CCL15 is approximately 0.03ng/ml as a capture antibody.

[Protocol Download](#)

- ELISA

## Gene Info — CCL15

Entrez GeneID	<a href="#">6359</a>
GeneBank Accession#	<a href="#">NM_032965</a>
Protein Accession#	<a href="#">NP_116741</a>
Gene Name	CCL15
Gene Alias	HCC-2, HMRP-2B, LKN1, Lkn-1, MIP-1d, MIP-5, NCC-3, NCC3, SCYA15, SCYL3, SY15
Gene Description	chemokine (C-C motif) ligand 15
Omim ID	<a href="#">601393</a>
Gene Ontology	<a href="#">Hyperlink</a>
Gene Summary	This gene, CCL15, is one of several CC cytokine genes clustered on 17q11.2. The CC cytokines are secreted proteins characterized by two adjacent cysteines. The cytokine encoded by this gene is chemotactic for T cells and monocytes and induces N-acetyl-beta-D-glucosaminidase release in monocytes. It induces changes in intracellular calcium concentration in monocytes and is thought to act through the CCR1 receptor. Read-through transcripts are expressed that include exons from the downstream cytokine gene CCL14, and are represented as GeneID: 348249. [provided by RefSeq]
Other Designations	CC chemokine 3 MIP-1 delta OTTHUMP00000163955 chemokine CC-2 leukotactin 1 macrophage inflammatory protein 5 small inducible cytokine subfamily A (Cys-Cys), member 15

## Pathway

- [Chemokine signaling pathway](#)
- [Cytokine-cytokine receptor interaction](#)

## Disease

- [Asthma](#)
- [Bronchiolitis](#)
- [Genetic Predisposition to Disease](#)
- [Infant](#)
- [Respiratory Syncytial Virus Infections](#)
- [Tobacco Use Disorder](#)