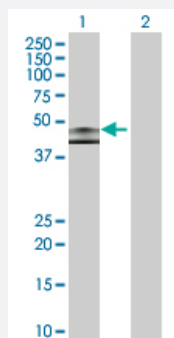


# SCTR 293T Cell Transient Overexpression Lysate(Denatured)

Catalog # H00006344-T01

Size 100 uL

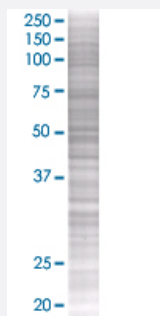
## Applications



### Western Blot

Lane 1: SCTR transfected lysate ( 50.2 KDa)

Lane 2: Non-transfected lysate.



### SDS-PAGE Gel

SCTR transfected lysate.

## Specification

**Transfected Cell Line** 293T

**Plasmid** pCMV-SCTR full-length

**Host** Human

**Theoretical MW (kDa)** 48.51

**Quality Control Testing** Transient overexpression cell lysate was tested with Anti-SCTR antibody ([H00006344-B01](#)) by Western Blots.  
Western Blot  
Lane 1: SCTR transfected lysate ( 50.2 KDa)  
Lane 2: Non-transfected lysate.  
SDS-PAGE Gel  
SCTR transfected lysate.

**Storage Buffer**

1X Sample Buffer (50 mM Tris-HCl, 2% SDS, 10% glycerol, 300 mM 2-mercaptoethanol, 0.01% Bromophenol blue)

**Storage Instruction**

Store at -80°C. Aliquot to avoid repeated freezing and thawing.

## Applications

- Western Blot

## Gene Info — SCTR

**Entrez GeneID**[6344](#)**GeneBank Accession#**[BC035757](#)**Protein Accession#**[AAH35757](#)**Gene Name**

SCTR

**Gene Alias**

SR

**Gene Description**

secretin receptor

**Omim ID**[182098](#)**Gene Ontology**[Hyperlink](#)**Gene Summary**

The protein encoded by this gene is a G protein-coupled receptor and belongs to the glucagon-VI P-secretin receptor family. It binds secretin which is the most potent regulator of pancreatic bicarbonate, electrolyte and volume secretion. Secretin and its receptor are suggested to be involved in pancreatic cancer and autism. [provided by RefSeq]

**Other Designations**

pancreatic secretin receptor

## Pathway

- [Neuroactive ligand-receptor interaction](#)