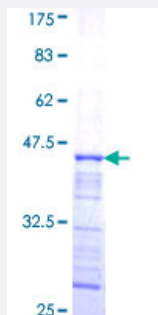


SCTR (Human) Recombinant Protein (Q01)

Catalog # H00006344-Q01

Size 25 ug, 10 ug

Applications



Specification

Product Description	Human SCTR partial ORF (NP_002971, 32 a.a. - 141 a.a.) recombinant protein with GST-tag at N-terminal.
Sequence	CDVLQVLWEEQDQCLQELSREQTGDLGTEQPVPGCCEGMWDNISCWPSSVPGRMVEVECPRLF LRMLTSRNGSLFRNCTQDGWSETFPRPNLACGVNVNDSSNEKRHSYLLK
Host	Wheat Germ (in vitro)
Theoretical MW (kDa)	37.84
Preparation Method	in vitro wheat germ expression system
Purification	Glutathione Sepharose 4 Fast Flow
Quality Control Testing	12.5% SDS-PAGE Stained with Coomassie Blue.
Storage Buffer	50 mM Tris-HCl, 10 mM reduced Glutathione, pH=8.0 in the elution buffer.
Storage Instruction	Store at -80°C. Aliquot to avoid repeated freezing and thawing.
Note	Best use within three months from the date of receipt of this protein.

Applications

- Enzyme-linked Immunoabsorbent Assay
- Western Blot (Recombinant protein)
- Antibody Production
- Protein Array

Gene Info — SCTR

Entrez GeneID [6344](#)

GeneBank Accession# [NM_002980](#)

Protein Accession# [NP_002971](#)

Gene Name SCTR

Gene Alias SR

Gene Description secretin receptor

Omim ID [182098](#)

Gene Ontology [Hyperlink](#)

Gene Summary The protein encoded by this gene is a G protein-coupled receptor and belongs to the glucagon-VI P-secretin receptor family. It binds secretin which is the most potent regulator of pancreatic bicarbonate, electrolyte and volume secretion. Secretin and its receptor are suggested to be involved in pancreatic cancer and autism. [provided by RefSeq]

Other Designations pancreatic secretin receptor

Pathway

- [Neuroactive ligand-receptor interaction](#)