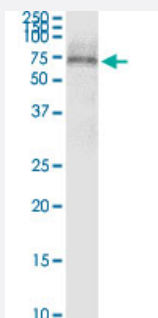


# SCTR monoclonal antibody (M01), clone 3H1

Catalog # H00006344-M01

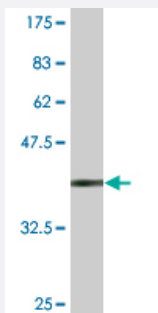
Size 100 ug

## Applications



### Western Blot (Tissue lysate)

SCTR monoclonal antibody (M01), clone 3H1. Western Blot analysis of SCTR expression in human stomach.



Western Blot detection against Immunogen (37.84 KDa) .

## Specification

<b>Product Description</b>	Mouse monoclonal antibody raised against a partial recombinant SCTR.
<b>Immunogen</b>	SCTR (NP_002971, 32 a.a. ~ 141 a.a) partial recombinant protein with GST tag. MW of the GST tag alone is 26 KDa.
<b>Sequence</b>	CDVLQVLWEEQDQCLQELSREQTGDLGTEQPVPGCEGMWDNISCWPSSVPGRMVEVECPRF LRMLTSRNGSLFRNCTQDGWSETFPRPNLACGVNVNDSSNEKRHSYLLK
<b>Host</b>	Mouse
<b>Reactivity</b>	Human
<b>Isotype</b>	IgG2a Kappa

**Quality Control Testing**

Antibody Reactive Against Recombinant Protein.  
Western Blot detection against Immunogen (37.84 KDa) .

**Storage Buffer**

In 1x PBS, pH 7.4

**Storage Instruction**

Store at -20°C or lower. Aliquot to avoid repeated freezing and thawing.

## Applications

- Western Blot (Tissue lysate)

SCTR monoclonal antibody (M01), clone 3H1. Western Blot analysis of SCTR expression in human stomach.

[Protocol Download](#)

- Western Blot (Recombinant protein)

[Protocol Download](#)

- ELISA

## Gene Info — SCTR

**Entrez GeneID**

[6344](#)

**GeneBank Accession#**

[NM\\_002980](#)

**Protein Accession#**

[NP\\_002971](#)

**Gene Name**

SCTR

**Gene Alias**

SR

**Gene Description**

secretin receptor

**Omim ID**

[182098](#)

**Gene Ontology**

[Hyperlink](#)

**Gene Summary**

The protein encoded by this gene is a G protein-coupled receptor and belongs to the glucagon-VI P-secretin receptor family. It binds secretin which is the most potent regulator of pancreatic bicarbonate, electrolyte and volume secretion. Secretin and its receptor are suggested to be involved in pancreatic cancer and autism. [provided by RefSeq]

**Other Designations**

pancreatic secretin receptor

## Pathway

- [Neuroactive ligand-receptor interaction](#)