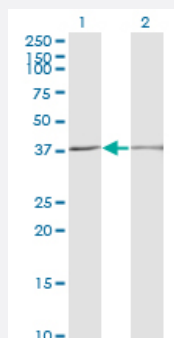


SCP2 monoclonal antibody (M01), clone 2E9-1B3

Catalog # H00006342-M01

Size 100 ug

Applications

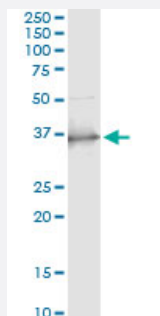


Western Blot (Transfected lysate)

Western Blot analysis of SCP2 expression in transfected 293T cell line by SCP2 monoclonal antibody (M01), clone 2E9-1B3.

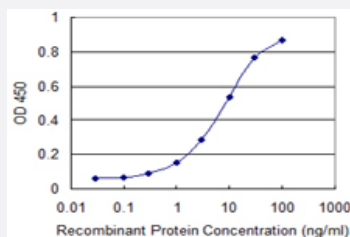
Lane 1: SCP2 transfected lysate (Predicted MW: 35 KDa).

Lane 2: Non-transfected lysate.



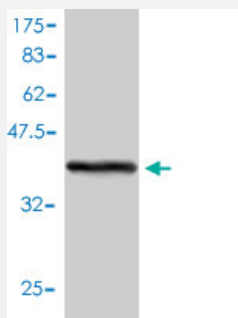
Immunoprecipitation

Immunoprecipitation of SCP2 transfected lysate using anti-SCP2 monoclonal antibody and Protein A Magnetic Bead, and immunoblotted with SCP2 MaxPab rabbit polyclonal antibody.



Sandwich ELISA (Recombinant protein)

Detection limit for recombinant GST tagged SCP2 is 0.3 ng/ml as a capture antibody.



Western Blot detection against Immunogen (41.47 KDa) .

Specification

Product Description	Mouse monoclonal antibody raised against a full length recombinant SCP2.
Immunogen	SCP2 (AAH05911, 1 a.a. ~ 143 a.a) full-length recombinant protein with GST tag. MW of the GST tag alone is 26 KDa.
Sequence	MGFPEAASSFRTHQIEAVPTSSASDGFKANLVFKEIEKKLEEEGEQFVKKIGGIFAFKVKDGP GGKEATWVVDVKNGKGSVLPNSDKKADCTITMADSDFLALMTGKMNPQSAFFQGKLKITGNMGLA MKLQNLQLQPGNAKL
Host	Mouse
Reactivity	Human
Isotype	IgG2a kappa
Quality Control Testing	Antibody Reactive Against Recombinant Protein. Western Blot detection against Immunogen (41.47 KDa) .
Storage Buffer	In 1x PBS, pH 7.4
Storage Instruction	Store at -20°C or lower. Aliquot to avoid repeated freezing and thawing.

Applications

● Western Blot (Transfected lysate)

Western Blot analysis of SCP2 expression in transfected 293T cell line by SCP2 monoclonal antibody (M01), clone 2E9-1B3.

Lane 1: SCP2 transfected lysate (Predicted MW: 35 KDa).

Lane 2: Non-transfected lysate.

[Protocol Download](#)

- Western Blot (Recombinant protein)

[Protocol Download](#)

- Immunoprecipitation

Immunoprecipitation of SCP2 transfected lysate using anti-SCP2 monoclonal antibody and Protein A Magnetic Bead, and immunoblotted with SCP2 MaxPab rabbit polyclonal antibody.

[Protocol Download](#)

- Sandwich ELISA (Recombinant protein)

Detection limit for recombinant GST tagged SCP2 is 0.3 ng/ml as a capture antibody.

[Protocol Download](#)

- ELISA

Gene Info — SCP2

Entrez GeneID [6342](#)

GeneBank Accession# [BC005911](#)

Protein Accession# [AAH05911](#)

Gene Name SCP2

Gene Alias DKFZp686C12188, DKFZp686D11188, NLTP, NSL-TP, SCPX

Gene Description sterol carrier protein 2

Omim ID [184755](#)

Gene Ontology [Hyperlink](#)

Gene Summary

This gene encodes two proteins: sterol carrier protein X (SCPx) and sterol carrier protein 2 (SCP2), as a result of transcription initiation from 2 independently regulated promoters. The transcript initiated from the proximal promoter encodes the longer SCPx protein, and the transcript initiated from the distal promoter encodes the shorter SCP2 protein, with the 2 proteins sharing a common C-terminus. Evidence suggests that the SCPx protein is a peroxisome-associated thiolase that is involved in the oxidation of branched chain fatty acids, while the SCP2 protein is thought to be an intracellular lipid transfer protein. This gene is highly expressed in organs involved in lipid metabolism, and may play a role in Zellweger syndrome, in which cells are deficient in peroxisomes and have impaired bile acid synthesis. Alternative splicing of this gene produces multiple transcript variants, some encoding different isoforms. The full-length nature of all transcript variants has not been determined. [provided by RefSeq]

Other Designations

OTTHUMP00000010488|nonspecific lipid-transfer protein|sterol carrier protein X

Pathway

- [Metabolic pathways](#)
- [PPAR signaling pathway](#)
- [Primary bile acid biosynthesis](#)

Disease

- [Asperger Syndrome](#)
- [Autistic Disorder](#)
- [Cardiovascular Diseases](#)
- [Diabetes Mellitus](#)
- [Edema](#)
- [Genetic Predisposition to Disease](#)
- [Narcolepsy](#)
- [Social Perception](#)