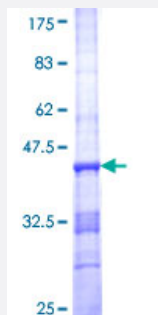


# SCN3A (Human) Recombinant Protein (Q01)

Catalog # H00006328-Q01

Size 25 ug, 10 ug

## Applications



## Specification

<b>Product Description</b>	Human SCN3A partial ORF ( NP_008853, 1861 a.a. - 1960 a.a.) recombinant protein with GST-tag at N-terminal.
<b>Sequence</b>	LCESGEMDALRIQMEDRFMASNPSKVSYPEPITTTTLKRKQEEVSAAIIQRNFRFCYLLKQRLKNISSNY NKEAIKGRIDLPIKQDMIIDKLNGNSTPEKTDG
<b>Host</b>	Wheat Germ (in vitro)
<b>Theoretical MW (kDa)</b>	36.74
<b>Interspecies Antigen Sequence</b>	Mouse (91)
<b>Preparation Method</b>	<a href="#">in vitro wheat germ expression system</a>
<b>Purification</b>	Glutathione Sepharose 4 Fast Flow
<b>Quality Control Testing</b>	12.5% SDS-PAGE Stained with Coomassie Blue.
<b>Storage Buffer</b>	50 mM Tris-HCl, 10 mM reduced Glutathione, pH=8.0 in the elution buffer.
<b>Storage Instruction</b>	Store at -80°C. Aliquot to avoid repeated freezing and thawing.
<b>Note</b>	Best use within three months from the date of receipt of this protein.

## Applications

- Enzyme-linked Immunoabsorbent Assay
- Western Blot (Recombinant protein)
- Antibody Production
- Protein Array

## Gene Info — SCN3A

Entrez GeneID [6328](#)

GeneBank Accession# [NM\\_006922](#)

Protein Accession# [NP\\_008853](#)

Gene Name SCN3A

Gene Alias KIAA1356, NAC3, Nav1.3

Gene Description sodium channel, voltage-gated, type III, alpha subunit

Omim ID [182391](#)

Gene Ontology [Hyperlink](#)

**Gene Summary** Voltage-gated sodium channels are transmembrane glycoprotein complexes composed of a large alpha subunit with 24 transmembrane domains and one or more regulatory beta subunits. They are responsible for the generation and propagation of action potentials in neurons and muscle. This gene encodes one member of the sodium channel alpha subunit gene family, and is found in a cluster of five alpha subunit genes on chromosome 2. Multiple transcript variants encoding different isoforms have been found for this gene. [provided by RefSeq]

**Other Designations** OTTHUMP00000041047|brain III voltage-gated sodium channel|sodium channel protein type 3 subunit alpha|sodium channel, voltage-gated, type III, alpha|sodium channel, voltage-gated, type III, alpha polypeptide

## Publication Reference

- [Knockdown of rno\\_circRNA\\_009194 Improves Outcomes in Traumatic Brain Injury Rats Through Inhibiting Voltage-gated Sodium Channel Nav1.3.](#)

Xian-Jian Huang, Gao-Jian Su, Chu-Wei Wu, Xiao-Song Sha, Jun-Feng Zou, Xian-Sheng Liu, Min Li, Yun He.

Journal of Neurotrauma 2022 Jan; 39(1-2):196.

Application: WB-Re, Rat, Rat neurons

## Disease

- [Epilepsy](#)
- [Genetic Predisposition to Disease](#)
- [Tobacco Use Disorder](#)