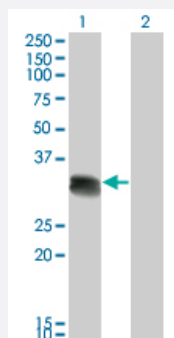


SCML1 monoclonal antibody (M01), clone 4G3

Catalog # H00006322-M01

Size 100 ug

Applications

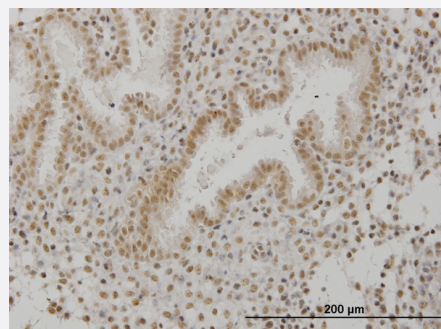


Western Blot (Transfected lysate)

Western Blot analysis of SCML1 expression in transfected 293T cell line by SCML1 monoclonal antibody (M01), clone 4G3.

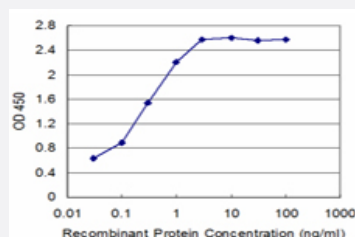
Lane 1: SCML1 transfected lysate (23.131 kDa).

Lane 2: Non-transfected lysate.



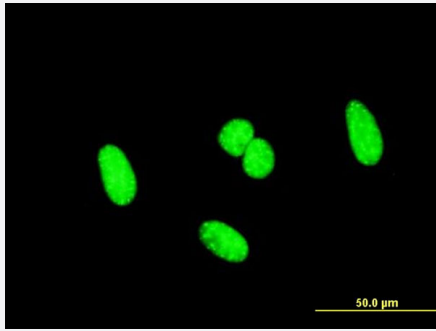
Immunohistochemistry (Formalin/PFA-fixed paraffin-embedded sections)

Immunoperoxidase of monoclonal antibody to SCML1 on formalin-fixed paraffin-embedded human endometrium. [antibody concentration 1.2 ug/ml]



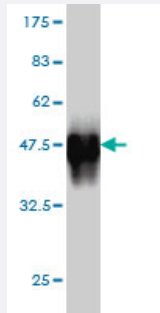
Sandwich ELISA (Recombinant protein)

Detection limit for recombinant GST tagged SCML1 is approximately 0.03 ng/ml as a capture antibody.



Immunofluorescence

Immunofluorescence of monoclonal antibody to SCML1 on HeLa cell .
[antibody concentration 10 ug/ml]



Western Blot detection against Immunogen (36.52 KDa) .

Specification

Product Description	Mouse monoclonal antibody raised against a partial recombinant SCML1.
Immunogen	SCML1 (NP_006737, 3 a.a. ~ 100 a.a) partial recombinant protein with GST tag. MW of the GST tag alone is 26 KDa.
Sequence	KNEVYETFSYPESYSPTLPVSRRENNSPSNLPRPSFCMEEYQRAELEEDPILSRTPSPVHPSDFS EHNCQPYASDGATYGSSSGLCLGNPRADSIHN
Host	Mouse
Reactivity	Human
Isotype	IgG2a Kappa
Quality Control Testing	Antibody Reactive Against Recombinant Protein. Western Blot detection against Immunogen (36.52 KDa) .
Storage Buffer	In 1x PBS, pH 7.4
Storage Instruction	Store at -20°C or lower. Aliquot to avoid repeated freezing and thawing.

Applications

- Western Blot (Transfected lysate)

Western Blot analysis of SCML1 expression in transfected 293T cell line by SCML1 monoclonal antibody (M01), clone 4G3.

Lane 1: SCML1 transfected lysate(23.131 KDa).

Lane 2: Non-transfected lysate.

[Protocol Download](#)

- Western Blot (Recombinant protein)

[Protocol Download](#)

- Immunohistochemistry (Formalin/PFA-fixed paraffin-embedded sections)

Immunoperoxidase of monoclonal antibody to SCML1 on formalin-fixed paraffin-embedded human endometrium. [antibody concentration 1.2 ug/ml]

[Protocol Download](#)

- Sandwich ELISA (Recombinant protein)

Detection limit for recombinant GST tagged SCML1 is approximately 0.03ng/ml as a capture antibody.

[Protocol Download](#)

- ELISA

- Immunofluorescence

Immunofluorescence of monoclonal antibody to SCML1 on HeLa cell . [antibody concentration 10 ug/ml]

Gene Info — SCML1

Entrez GeneID [6322](#)

GeneBank Accession# [NM_006746](#)

Protein Accession# [NP_006737](#)

Gene Name SCML1

Gene Alias -

Gene Description sex comb on midleg-like 1 (Drosophila)

Omim ID [300227](#)

Gene Ontology [Hyperlink](#)

Other Designations

OTTHUMP00000022996|OTTHUMP00000025692|sex comb on midleg-like 1