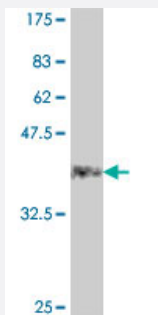


CLEC11A polyclonal antibody (A01)

Catalog # H00006320-A01

Size 50 uL

Applications



Western Blot detection against Immunogen (38.21 KDa) .

Specification

Product Description	Mouse polyclonal antibody raised against a partial recombinant CLEC11A.
Immunogen	CLEC11A (NP_002966, 214 a.a. ~ 323 a.a) partial recombinant protein with GST tag.
Sequence	PADRQQMEALTRYLRAALAPYNWPVWLGVHDDRRAEGLYLFENGQRVSFFAWHRSPRPELGAQP SASPHPLSPDQPNGGTLENCVAQASDDGSWWDHDCQRRLYVCEFPF
Host	Mouse
Reactivity	Human
Interspecies Antigen Sequence	Mouse (88); Rat (89)
Quality Control Testing	Antibody Reactive Against Recombinant Protein. Western Blot detection against Immunogen (38.21 KDa) .
Storage Buffer	50 % glycerol
Storage Instruction	Store at -20°C or lower. Aliquot to avoid repeated freezing and thawing.

Applications

- Western Blot (Recombinant protein)

[Protocol Download](#)

- ELISA

Gene Info — CLEC11A

Entrez GeneID [6320](#)

GeneBank Accession# [NM_002975](#)

Protein Accession# [NP_002966](#)

Gene Name CLEC11A

Gene Alias CLECSF3, LSLCL, P47, SCGF

Gene Description C-type lectin domain family 11, member A

Omim ID [604713](#)

Gene Ontology [Hyperlink](#)

Gene Summary This gene encodes a member of the C-type lectin superfamily. The encoded protein is a secreted sulfated glycoprotein and functions as a growth factor for primitive hematopoietic progenitor cells. An alternative splice variant has been described but its biological nature has not been determined . [provided by RefSeq]

Other Designations C-type (calcium dependent, carbohydrate-recognition domain) lectin, superfamily member 3|lymphocyte secreted long form of C-type lectin|stem cell growth factor|stem cell growth factor; lymphocyte secreted C-type lectin

Disease

- [Genetic Predisposition to Disease](#)
- [Vitiligo](#)