

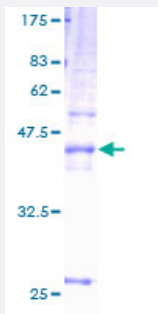
Full-Length

## SAS (Human) Recombinant Protein (P01)

Catalog # H00006302-P01

Size 25 ug, 10 ug

### Applications



### Specification

#### Product Description

Human SAS full-length ORF ( AAH10377, 1 a.a. - 210 a.a.) recombinant protein with GST-tag at N-terminal.

#### Sequence

MVCGGFACSKNALCALNVVYMLVSLLLIGVAAWGKGLGLVSSIHIGGVIAVGVFLLLIAGLVGA  
VNHHQVLLFFYMIILGLVFIFQFVISCCLAINRSKQTDVINASWWMSNKTRDELERSFDCCGLFN  
LTTLYQQDYDFCTAICKSQSPTCQMCGEKFLKHSDEALKILGGVGLFFSFTEILGVWLAMRFRNQK  
DPRANPSAFL

#### Host

Wheat Germ (in vitro)

#### Theoretical MW (kDa)

48.84

#### Interspecies Antigen Sequence

Mouse (88); Rat (88)

#### Preparation Method

[in vitro wheat germ expression system](#)

#### Purification

Glutathione Sepharose 4 Fast Flow

#### Quality Control Testing

12.5% SDS-PAGE Stained with Coomassie Blue.

#### Storage Buffer

50 mM Tris-HCl, 10 mM reduced Glutathione, pH=8.0 in the elution buffer.

#### Storage Instruction

Store at -80°C. Aliquot to avoid repeated freezing and thawing.

## Note

Best use within three months from the date of receipt of this protein.

## Applications

- Enzyme-linked Immunoabsorbent Assay
- Western Blot (Recombinant protein)
- Antibody Production
- Protein Array

## Gene Info — TSPAN31

Entrez GeneID [6302](#)

GeneBank Accession# [BC010377](#)

Protein Accession# [AAH10377](#)

Gene Name TSPAN31

Gene Alias SAS

Gene Description tetraspanin 31

Omim ID [181035](#)

Gene Ontology [Hyperlink](#)

**Gene Summary** The protein encoded by this gene is a member of the transmembrane 4 superfamily, also known as the tetraspanin family. Most of these members are cell-surface proteins that are characterized by the presence of four hydrophobic domains. The proteins mediate signal transduction events that play a role in the regulation of cell development, activation, growth and motility. This encoded protein is thought to be involved in growth-related cellular processes. This gene is associated with tumorigenesis and osteosarcoma. [provided by RefSeq]

**Other Designations** sarcoma amplified sequence|transmembrane 4 protein

## Disease

- [Cardiovascular Diseases](#)

- [Diabetes Mellitus](#)
- [Edema](#)