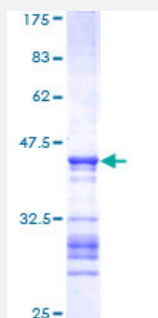


# MAPK12 (Human) Recombinant Protein (Q01)

Catalog # H00006300-Q01

Size 25 ug, 10 ug

## Applications



## Specification

<b>Product Description</b>	Human MAPK12 partial ORF ( AAH15741, 251 a.a. - 367 a.a.) recombinant protein with GST-tag at N-terminal.
<b>Sequence</b>	QRLQSDEAKNYMKGLPELEKKDFASILTNASPLAVNLEKMLVLDAEQRVTAGALAHYPFESLH DTEDEPQVQKYDDSFDDVDRTLDEWKRVTYKEVLSFKPPRQLGARVSKETPL
<b>Host</b>	Wheat Germ (in vitro)
<b>Theoretical MW (kDa)</b>	38.61
<b>Interspecies Antigen Sequence</b>	Mouse (88); Rat (90)
<b>Preparation Method</b>	<a href="#">in vitro wheat germ expression system</a>
<b>Purification</b>	Glutathione Sepharose 4 Fast Flow
<b>Quality Control Testing</b>	12.5% SDS-PAGE Stained with Coomassie Blue.
<b>Storage Buffer</b>	50 mM Tris-HCl, 10 mM reduced Glutathione, pH=8.0 in the elution buffer.
<b>Storage Instruction</b>	Store at -80°C. Aliquot to avoid repeated freezing and thawing.
<b>Note</b>	Best use within three months from the date of receipt of this protein.

## Applications

- Enzyme-linked Immunoabsorbent Assay
- Western Blot (Recombinant protein)
- Antibody Production
- Protein Array

## Gene Info — MAPK12

Entrez GeneID [6300](#)

GeneBank Accession# [BC015741](#)

Protein Accession# [AAH15741](#)

Gene Name MAPK12

Gene Alias ERK3, ERK6, P38GAMMA, PRKM12, SAPK-3, SAPK3

Gene Description mitogen-activated protein kinase 12

Omim ID [602399](#)

Gene Ontology [Hyperlink](#)

**Gene Summary** Activation of members of the mitogen-activated protein kinase family is a major mechanism for transduction of extracellular signals. Stress-activated protein kinases are one subclass of MAP kinases. The protein encoded by this gene functions as a signal transducer during differentiation of myoblasts to myotubes. [provided by RefSeq]

**Other Designations** mitogen-activated protein kinase 3|stress-activated protein kinase 3

## Pathway

- [Amyotrophic lateral sclerosis \(ALS\)](#)
- [Epithelial cell signaling in Helicobacter pylori infection](#)
- [Fc epsilon RI signaling pathway](#)
- [GnRH signaling pathway](#)

- [Leukocyte transendothelial migration](#)
- [MAPK signaling pathway](#)
- [Neurotrophin signaling pathway](#)
- [T cell receptor signaling pathway](#)
- [Toll-like receptor signaling pathway](#)
- [VEGF signaling pathway](#)

## Disease

- [Cardiovascular Diseases](#)
- [Diabetes Mellitus](#)
- [Edema](#)