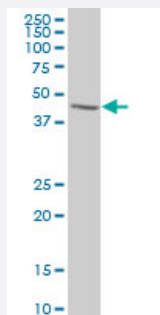


MAPK12 monoclonal antibody (M05), clone 1B3

Catalog # H00006300-M05

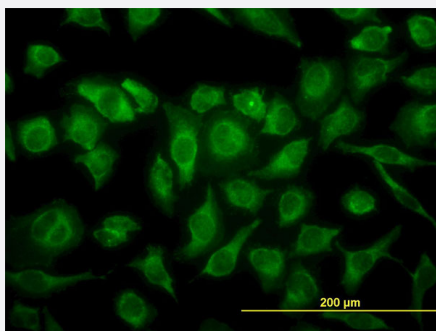
Size 100 ug

Applications



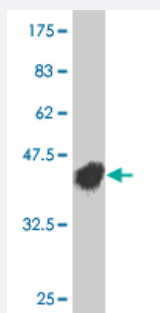
Western Blot (Cell lysate)

MAPK12 monoclonal antibody (M05), clone 1B3 Western Blot analysis of MAPK12 expression in Jurkat (Cat # L017V1).



Immunofluorescence

Immunofluorescence of monoclonal antibody to MAPK12 on HeLa cell. [antibody concentration 10 ug/ml]



Western Blot detection against Immunogen (38.61 kDa) .

Specification

Product Description

Mouse monoclonal antibody raised against a partial recombinant MAPK12.

Immunogen	MAPK12 (AAH15741, 251 a.a. ~ 367 a.a) partial recombinant protein with GST tag. MW of the GST tag alone is 26 KDa.
Sequence	QRLQSDEAKNYMKGLPELEKKDFASILTNASPLAVNLLKMLVLDAEQRVTAGALAHYPFESLH DTEDEPQVQKYDDSFDDVDRTLDEWKRVTYKEVLSFKPPRQLGARVSKETPL
Host	Mouse
Reactivity	Human
Interspecies Antigen Sequence	Mouse (88); Rat (90)
Isotype	IgG1 Kappa
Quality Control Testing	Antibody Reactive Against Recombinant Protein. Western Blot detection against Immunogen (38.61 KDa) .
Storage Buffer	In 1x PBS, pH 7.4
Storage Instruction	Store at -20°C or lower. Aliquot to avoid repeated freezing and thawing.

Applications

- Western Blot (Cell lysate)

MAPK12 monoclonal antibody (M05), clone 1B3 Western Blot analysis of MAPK12 expression in Jurkat (Cat # L017V1).

[Protocol Download](#)

- Western Blot (Recombinant protein)

[Protocol Download](#)

- ELISA

- Immunofluorescence

Immunofluorescence of monoclonal antibody to MAPK12 on HeLa cell. [antibody concentration 10 ug/ml]

Gene Info — MAPK12

Entrez GeneID [6300](#)

GeneBank Accession# [BC015741](#)

Protein Accession#	AAH15741
Gene Name	MAPK12
Gene Alias	ERK3, ERK6, P38GAMMA, PRKM12, SAPK-3, SAPK3
Gene Description	mitogen-activated protein kinase 12
Omim ID	602399
Gene Ontology	Hyperlink
Gene Summary	Activation of members of the mitogen-activated protein kinase family is a major mechanism for transduction of extracellular signals. Stress-activated protein kinases are one subclass of MAP kinases. The protein encoded by this gene functions as a signal transducer during differentiation of myoblasts to myotubes. [provided by RefSeq]
Other Designations	mitogen-activated protein kinase 3 stress-activated protein kinase 3

Pathway

- [Amyotrophic lateral sclerosis \(ALS\)](#)
- [Epithelial cell signaling in Helicobacter pylori infection](#)
- [Fc epsilon RI signaling pathway](#)
- [GnRH signaling pathway](#)
- [Leukocyte transendothelial migration](#)
- [MAPK signaling pathway](#)
- [Neurotrophin signaling pathway](#)
- [T cell receptor signaling pathway](#)
- [Toll-like receptor signaling pathway](#)
- [VEGF signaling pathway](#)

Disease

- [Cardiovascular Diseases](#)
- [Diabetes Mellitus](#)

- [Edema](#)