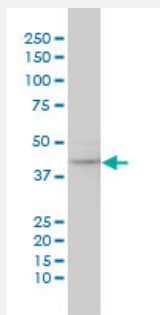


# MAPK12 monoclonal antibody (M04), clone 2C1

Catalog # H00006300-M04

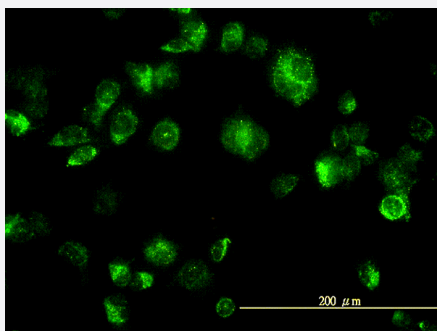
Size 100 ug

## Applications



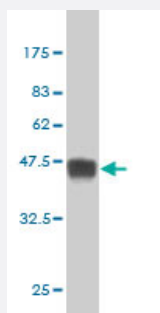
### Western Blot (Cell lysate)

MAPK12 monoclonal antibody (M04), clone 2C1 Western Blot analysis of MAPK12 expression in HeLa ( Cat # L013V1 ).



### Immunofluorescence

Immunofluorescence of monoclonal antibody to MAPK12 on HeLa cell. [antibody concentration 10 ug/ml]



Western Blot detection against Immunogen (38.61 KDa) .

## Specification

### Product Description

Mouse monoclonal antibody raised against a partial recombinant MAPK12.

<b>Immunogen</b>	MAPK12 (AAH15741, 251 a.a. ~ 367 a.a) partial recombinant protein with GST tag. MW of the GST tag alone is 26 KDa.
<b>Sequence</b>	QRLQSDEAKNYMKGLPELEKKDFASILTNASPLAVNLLKMLVLDAEQRVTAGEALAHYPYFESLH DTEDEPQVQKYDDSFDDVDRTLDEWKRVTYKEVLSFKPPRQLGARVSKETPL
<b>Host</b>	Mouse
<b>Reactivity</b>	Human
<b>Interspecies Antigen Sequence</b>	Mouse (88); Rat (90)
<b>Isotype</b>	IgG1 kappa
<b>Quality Control Testing</b>	Antibody Reactive Against Recombinant Protein. Western Blot detection against Immunogen (38.61 KDa) .
<b>Storage Buffer</b>	In 1x PBS, pH 7.4
<b>Storage Instruction</b>	Store at -20°C or lower. Aliquot to avoid repeated freezing and thawing.

## Applications

- Western Blot (Cell lysate)

MAPK12 monoclonal antibody (M04), clone 2C1 Western Blot analysis of MAPK12 expression in Hela ( Cat # L013V1 ).

[Protocol Download](#)

- Western Blot (Recombinant protein)

[Protocol Download](#)

- ELISA

- Immunofluorescence

Immunofluorescence of monoclonal antibody to MAPK12 on HeLa cell. [antibody concentration 10 ug/ml]

## Gene Info — MAPK12

**Entrez GeneID** [6300](#)

**GeneBank Accession#** [BC015741](#)

Protein Accession#	<a href="#">AAH15741</a>
Gene Name	MAPK12
Gene Alias	ERK3, ERK6, P38GAMMA, PRKM12, SAPK-3, SAPK3
Gene Description	mitogen-activated protein kinase 12
Omim ID	<a href="#">602399</a>
Gene Ontology	<a href="#">Hyperlink</a>
Gene Summary	Activation of members of the mitogen-activated protein kinase family is a major mechanism for transduction of extracellular signals. Stress-activated protein kinases are one subclass of MAP kinases. The protein encoded by this gene functions as a signal transducer during differentiation of myoblasts to myotubes. [provided by RefSeq]
Other Designations	mitogen-activated protein kinase 3 stress-activated protein kinase 3

## Pathway

- [Amyotrophic lateral sclerosis \(ALS\)](#)
- [Epithelial cell signaling in Helicobacter pylori infection](#)
- [Fc epsilon RI signaling pathway](#)
- [GnRH signaling pathway](#)
- [Leukocyte transendothelial migration](#)
- [MAPK signaling pathway](#)
- [Neurotrophin signaling pathway](#)
- [T cell receptor signaling pathway](#)
- [Toll-like receptor signaling pathway](#)
- [VEGF signaling pathway](#)

## Disease

- [Cardiovascular Diseases](#)
- [Diabetes Mellitus](#)

- [Edema](#)