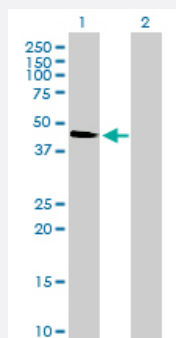


MAPK12 monoclonal antibody (M01), clone 4F4-3D2

Catalog # H00006300-M01

Size 100 ug

Applications

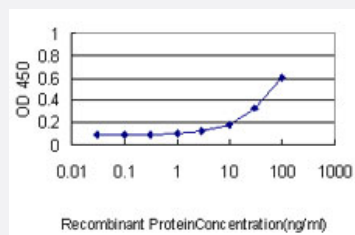


Western Blot (Transfected lysate)

Western Blot analysis of MAPK12 expression in transfected 293T cell line by MAPK12 monoclonal antibody (M01), clone 4F4-3D2.

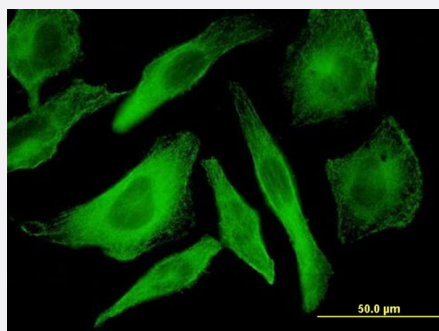
Lane 1: MAPK12 transfected lysate (41.9 KDa).

Lane 2: Non-transfected lysate.



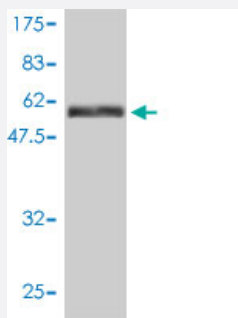
Sandwich ELISA (Recombinant protein)

Detection limit for recombinant GST tagged MAPK12 is approximately 1 ng/ml as a capture antibody.



Immunofluorescence

Immunofluorescence of monoclonal antibody to MAPK12 on HeLa cell .
[antibody concentration 10 ug/ml]



Western Blot detection against Immunogen (66 KDa) .

Specification

Product Description	Mouse monoclonal antibody raised against a full length recombinant MAPK12.
Immunogen	MAPK12 (AAH15741.1, 1 a.a. ~ 367 a.a) full-length recombinant protein with GST tag. MW of the GST tag alone is 26 KDa.
Sequence	MSSPPPARSGFYRQEVTKTAWEVRAVYRDLQPVGSGAYGAVCSAVDGRGTGAKVAIKKLYRPFQ SELF AKRAYRELRLKHMRENHENVIGLLDVFTPDETLDDFTDFYLVMPFMGTDLGKLMKHEKLGED RIQFLVYQMLKGLRYIHAAGIIHRDLKPGNLAVNEDCELKILDFGLARQADSEMTGYVTRWYRAPE VILNWMRYTQTVDIWSVGCIMAEMITGKTLFKGSDHLDQLKEIMKVTGTPPAEFVQRLQSDEAKNY MKGLPELEKKDFASILTNASPLAVNLEKMLVLDAEQRVTAGALAHYPYFESLHDTEDPQVQKY DDSFDDVDRTLDEWKRVTYKEVLSFKPPRQLGARVSKETPL
Host	Mouse
Reactivity	Human
Interspecies Antigen Sequence	Mouse (93); Rat (94)
Isotype	IgG1 kappa
Quality Control Testing	Antibody Reactive Against Recombinant Protein. Western Blot detection against Immunogen (66 KDa) .
Storage Buffer	In 1x PBS, pH 7.4
Storage Instruction	Store at -20°C or lower. Aliquot to avoid repeated freezing and thawing.

Applications

- Western Blot (Transfected lysate)

Western Blot analysis of MAPK12 expression in transfected 293T cell line by MAPK12 monoclonal antibody (M01), clone 4F4-3D2.

Lane 1: MAPK12 transfected lysate(41.9 KDa).

Lane 2: Non-transfected lysate.

[Protocol Download](#)

- Western Blot (Recombinant protein)

[Protocol Download](#)

- Sandwich ELISA (Recombinant protein)

Detection limit for recombinant GST tagged MAPK12 is approximately 1ng/ml as a capture antibody.

[Protocol Download](#)

- ELISA

- Immunofluorescence

Immunofluorescence of monoclonal antibody to MAPK12 on HeLa cell . [antibody concentration 10 ug/ml]

Gene Info — MAPK12

Entrez GeneID [6300](#)

GeneBank Accession# [BC015741](#)

Protein Accession# [AAH15741.1](#)

Gene Name MAPK12

Gene Alias ERK3, ERK6, P38GAMMA, PRKM12, SAPK-3, SAPK3

Gene Description mitogen-activated protein kinase 12

Omim ID [602399](#)

Gene Ontology [Hyperlink](#)

Gene Summary Activation of members of the mitogen-activated protein kinase family is a major mechanism for transduction of extracellular signals. Stress-activated protein kinases are one subclass of MAP kinases. The protein encoded by this gene functions as a signal transducer during differentiation of myoblasts to myotubes. [provided by RefSeq]

Other Designations

mitogen-activated protein kinase 3|stress-activated protein kinase 3

Publication Reference

- [The Dystrophin Glycoprotein Complex Regulates the Epigenetic Activation of Muscle Stem Cell Commitment.](#)

Natasha C Chang , Marie-Claude Sincennes , Fabien P Chevalier , Caroline E Brun , Melanie Lacaria , Jessica Segalés , Pura Muñoz-Cánoves , Hong Ming , Michael A Rudnicki.

Cell Stem Cell 2018 May; 22(5):755.

Application: IF, PLA, Mouse, Mouse Satellite cells

Pathway

- [Amyotrophic lateral sclerosis \(ALS\)](#)
- [Epithelial cell signaling in Helicobacter pylori infection](#)
- [Fc epsilon RI signaling pathway](#)
- [GnRH signaling pathway](#)
- [Leukocyte transendothelial migration](#)
- [MAPK signaling pathway](#)
- [Neurotrophin signaling pathway](#)
- [T cell receptor signaling pathway](#)
- [Toll-like receptor signaling pathway](#)
- [VEGF signaling pathway](#)

Disease

- [Cardiovascular Diseases](#)
- [Diabetes Mellitus](#)
- [Edema](#)