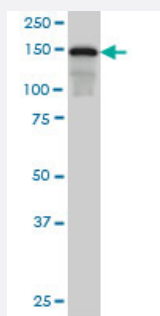


SAFB monoclonal antibody (M04), clone 5A11

Catalog # H00006294-M04

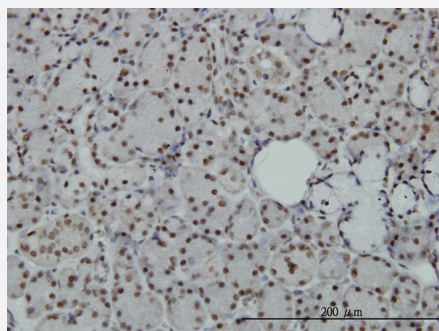
Size 100 ug

Applications



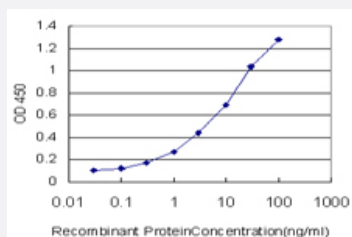
Western Blot (Cell lysate)

SAFB monoclonal antibody (M04), clone 5A11 Western Blot analysis of SAFB expression in HeLa S3 NE (Cat # L013V3).



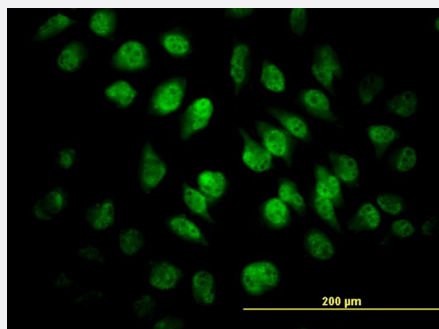
Immunohistochemistry (Formalin/PFA-fixed paraffin-embedded sections)

Immunoperoxidase of monoclonal antibody to SAFB on formalin-fixed paraffin-embedded human salivary gland. [antibody concentration 3 ug/ml]



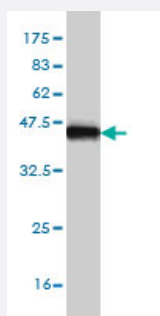
Sandwich ELISA (Recombinant protein)

Detection limit for recombinant GST tagged SAFB is approximately 0.1ng/ml as a capture antibody.



Immunofluorescence

Immunofluorescence of monoclonal antibody to SAFB on HeLa cell. [antibody concentration 10 ug/ml]



Western Blot detection against Immunogen (35.64 KDa) .

Specification

Product Description	Mouse monoclonal antibody raised against a partial recombinant SAFB.
Immunogen	SAFB (NP_002958, 111 a.a. ~ 200 a.a) partial recombinant protein with GST tag. MW of the GST tag alone is 26 KDa.
Sequence	DGQEDVETSLENLQDIDIMDISVLDEAEIDNGSVADCVEDDDADNLQESLSDSRELVEGEMKELPEQLQEHAIEDKETINNLDTSSSDFT
Host	Mouse
Reactivity	Human
Interspecies Antigen Sequence	Mouse (78)
Isotype	IgG2b Kappa
Quality Control Testing	Antibody Reactive Against Recombinant Protein. Western Blot detection against Immunogen (35.64 KDa) .
Storage Buffer	In 1x PBS, pH 7.4
Storage Instruction	Store at -20°C or lower. Aliquot to avoid repeated freezing and thawing.

Applications

- Western Blot (Cell lysate)

SAFB monoclonal antibody (M04), clone 5A11 Western Blot analysis of SAFB expression in Hela S3 NE (Cat # L013V3).

[Protocol Download](#)

- Western Blot (Recombinant protein)

[Protocol Download](#)

- Immunohistochemistry (Formalin/PFA-fixed paraffin-embedded sections)

Immunoperoxidase of monoclonal antibody to SAFB on formalin-fixed paraffin-embedded human salivary gland. [antibody concentration 3 ug/ml]

[Protocol Download](#)

- Sandwich ELISA (Recombinant protein)

Detection limit for recombinant GST tagged SAFB is approximately 0.1ng/ml as a capture antibody.

[Protocol Download](#)

- ELISA

- Immunofluorescence

Immunofluorescence of monoclonal antibody to SAFB on HeLa cell. [antibody concentration 10 ug/ml]

Gene Info — SAFB

Entrez GeneID	6294
---------------	----------------------

GeneBank Accession#	NM_002967
---------------------	---------------------------

Protein Accession#	NP_002958
--------------------	---------------------------

Gene Name	SAFB
-----------	------

Gene Alias	DKFZp779C1727, HAP, HET, SAFB1
------------	--------------------------------

Gene Description	scaffold attachment factor B
------------------	------------------------------

Omim ID	602895
---------	------------------------

Gene Ontology

[Hyperlink](#)

Gene Summary

This gene encodes a DNA-binding protein that has high specificity for scaffold or matrix attachment region DNA elements (S/MAR DNA). This protein is thought to be involved in attaching the base of chromatin loops to the nuclear matrix but there is conflicting evidence as to whether this protein is a component of chromatin or a nuclear matrix protein. Scaffold attachment factors are a specific subset of nuclear matrix proteins (NMP) that specifically bind to S/MAR. This encoded protein is thought to serve as a molecular base to assemble a 'transcriptosome complex' in the vicinity of actively transcribed genes. It is involved in the regulation of the heat shock protein 27 transcription and also can act as an estrogen receptor corepressor. This gene is a candidate gene for breast tumorigenesis. [provided by RefSeq]

Other Designations

HSP27 ERE-TATA-binding protein|Hsp27 ERE-TATA binding protein|glutathione S-transferase fusion protein|heat-shock protein (HSP27) estrogen response element and TATA box-binding protein|scaffold attachment factor B1

Publication Reference

- [A novel class of microRNA-recognition elements that function only within open reading frames.](#)

Zhang K, Zhang X, Cai Z, Zhou J, Cao R, Zhao Y, Chen Z, Wang D, Ruan W, Zhao Q, Liu G, Xue Y, Qin Y, Zhou B, Wu L, Nilsen T, Zhou Y, Fu XD.

Nature Structural & Molecular Biology 2018 Nov; 25(11):1019.

Application: WB-Tr, Human, HeLa cells