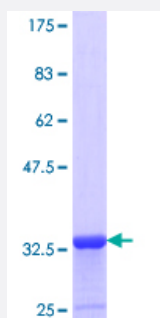


# S100P (Human) Recombinant Protein (Q01)

Catalog # H00006286-Q01

Size 25 ug, 10 ug

## Applications



## Specification

|                                |  |
|--------------------------------|--|
| <b>Product Description</b>     | Human S100P partial ORF ( NP_005971.1, 1 a.a. - 69 a.a.) recombinant protein with GST-tag at N-terminal. |
| <b>Sequence</b>                | MTELETAMGMIIIDVFSRYSGSEGSTQTLTKGELKVLMEKELPGFLQSGKDKDAVDKLLKDL DANG DAQV                                 |
| <b>Host</b>                    | Wheat Germ (in vitro)  |
| <b>Theoretical MW (kDa)</b>    | 33.33  |
| <b>Preparation Method</b>      | <a href="#">in vitro wheat germ expression system</a>  |
| <b>Purification</b>            | Glutathione Sepharose 4 Fast Flow  |
| <b>Quality Control Testing</b> | 12.5% SDS-PAGE Stained with Coomassie Blue.  |
| <b>Storage Buffer</b>          | 50 mM Tris-HCl, 10 mM reduced Glutathione, pH=8.0 in the elution buffer.                                 |
| <b>Storage Instruction</b>     | Store at -80°C. Aliquot to avoid repeated freezing and thawing.  |
| <b>Note</b>                    | Best use within three months from the date of receipt of this protein.                                   |

## Applications

- Enzyme-linked Immunoabsorbent Assay
- Western Blot (Recombinant protein)
- Antibody Production
- Protein Array

## Gene Info — S100P

Entrez GeneID [6286](#)

GeneBank Accession# [NM\\_005980](#)

Protein Accession# [NP\\_005971.1](#)

Gene Name S100P

Gene Alias MIG9

Gene Description S100 calcium binding protein P

Omim ID [600614](#)

Gene Ontology [Hyperlink](#)

**Gene Summary** The protein encoded by this gene is a member of the S100 family of proteins containing 2 EF-hand calcium-binding motifs. S100 proteins are localized in the cytoplasm and/or nucleus of a wide range of cells, and involved in the regulation of a number of cellular processes such as cell cycle progression and differentiation. S100 genes include at least 13 members which are located as a cluster on chromosome 1q21; however, this gene is located at 4p16. This protein, in addition to binding  $\text{Ca}^{2+}$ , also binds  $\text{Zn}^{2+}$  and  $\text{Mg}^{2+}$ . This protein may play a role in the etiology of prostate cancer. [provided by RefSeq]

**Other Designations** OTTHUMP00000115574|S100 calcium-binding protein P|migration-inducing gene 9