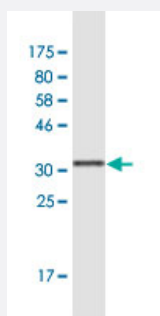


# S100P monoclonal antibody (M02A), clone 4E7

Catalog # H00006286-M02A

Size 200 uL

## Applications



Western Blot detection against Immunogen (36.19 KDa) .

## Specification

<b>Product Description</b>	Mouse monoclonal antibody raised against a full-length recombinant S100P.
<b>Immunogen</b>	S100P (AAH06819, 1 a.a. ~ 95 a.a) full-length recombinant protein with GST tag. MW of the GST tag alone is 26 KDa.
<b>Sequence</b>	MTELETAMGMIIDVFSRYSGSEGSTQTLTKGELKVLMEKELPGFLQSGKDKDAVDKLLKDL DANG DAQVDFSEFMFVAATSACHKYFEKAGLK
<b>Host</b>	Mouse
<b>Reactivity</b>	Human
<b>Isotype</b>	IgG2b Kappa
<b>Quality Control Testing</b>	Antibody Reactive Against Recombinant Protein. Western Blot detection against Immunogen (36.19 KDa) .
<b>Storage Buffer</b>	In ascites fluid
<b>Storage Instruction</b>	Store at -20°C or lower. Aliquot to avoid repeated freezing and thawing.

## Applications

- Western Blot (Recombinant protein)

[Protocol Download](#)

- ELISA

## Gene Info — S100P

Entrez GeneID [6286](#)

GeneBank Accession# [BC006819](#)

Protein Accession# [AAH06819](#)

Gene Name S100P

Gene Alias MIG9

Gene Description S100 calcium binding protein P

Omim ID [600614](#)

Gene Ontology [Hyperlink](#)

**Gene Summary** The protein encoded by this gene is a member of the S100 family of proteins containing 2 EF-hand calcium-binding motifs. S100 proteins are localized in the cytoplasm and/or nucleus of a wide range of cells, and involved in the regulation of a number of cellular processes such as cell cycle progression and differentiation. S100 genes include at least 13 members which are located as a cluster on chromosome 1q21; however, this gene is located at 4p16. This protein, in addition to binding  $\text{Ca}^{2+}$ , also binds  $\text{Zn}^{2+}$  and  $\text{Mg}^{2+}$ . This protein may play a role in the etiology of prostate cancer. [provided by RefSeq]

**Other Designations** OTTHUMP00000115574|S100 calcium-binding protein P|migration-inducing gene 9