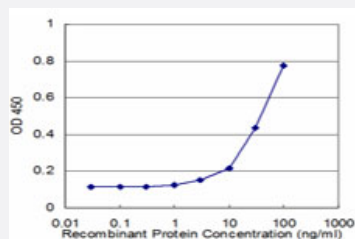


S100P monoclonal antibody (M02), clone 4E7

Catalog # H00006286-M02

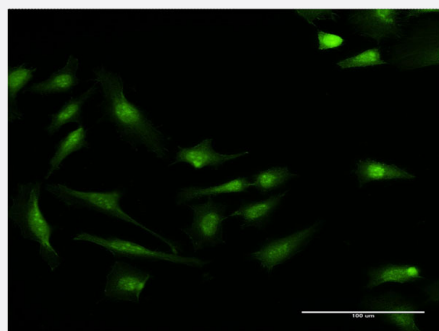
Size 100 ug

Applications



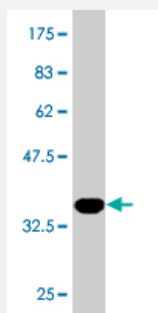
Sandwich ELISA (Recombinant protein)

Detection limit for recombinant GST tagged S100P is approximately 3ng/ml as a capture antibody.



Immunofluorescence

Immunofluorescence of monoclonal antibody to S100P on HeLa cell . [antibody concentration 10 ug/ml]



Western Blot detection against Immunogen (36.19 KDa) .

Specification

Product Description

Mouse monoclonal antibody raised against a full-length recombinant S100P.

Immunogen	S100P (AAH06819, 1 a.a. ~ 95 a.a) full-length recombinant protein with GST tag. MW of the GST tag alone is 26 KDa.
Sequence	MTELETAMGMIIDVFSRYSGSEGSTQTLTKGELKVLMEKELPGFLQSGKDKDAVDKLLKDL DANG DAQVDFSEFMFVAAIT SACHKYFEKAGLK
Host	Mouse
Reactivity	Human
Isotype	IgG2b Kappa
Quality Control Testing	Antibody Reactive Against Recombinant Protein. Western Blot detection against Immunogen (36.19 KDa) .
Storage Buffer	In 1x PBS, pH 7.4
Storage Instruction	Store at -20°C or lower. Aliquot to avoid repeated freezing and thawing.

Applications

- Western Blot (Recombinant protein)

[Protocol Download](#)

- Sandwich ELISA (Recombinant protein)

Detection limit for recombinant GST tagged S100P is approximately 3ng/ml as a capture antibody.

[Protocol Download](#)

- ELISA

- Immunofluorescence

Immunofluorescence of monoclonal antibody to S100P on HeLa cell . [antibody concentration 10 ug/ml]

Gene Info — S100P

Entrez GeneID	6286
GeneBank Accession#	BC006819
Protein Accession#	AAH06819
Gene Name	S100P

Gene Alias	MIG9
Gene Description	S100 calcium binding protein P
Omim ID	600614
Gene Ontology	Hyperlink
Gene Summary	<p>The protein encoded by this gene is a member of the S100 family of proteins containing 2 EF-hand calcium-binding motifs. S100 proteins are localized in the cytoplasm and/or nucleus of a wide range of cells, and involved in the regulation of a number of cellular processes such as cell cycle progression and differentiation. S100 genes include at least 13 members which are located as a cluster on chromosome 1q21; however, this gene is located at 4p16. This protein, in addition to binding Ca^{2+}, also binds Zn^{2+} and Mg^{2+}. This protein may play a role in the etiology of prostate cancer. [provided by RefSeq]</p>
Other Designations	OTTHUMP00000115574 S100 calcium-binding protein P migration-inducing gene 9