

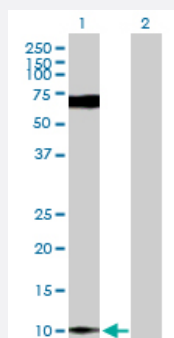
MaxPab®

## S100P purified MaxPab mouse polyclonal antibody (B03P)

Catalog # H00006286-B03P

Size 50 ug

### Applications

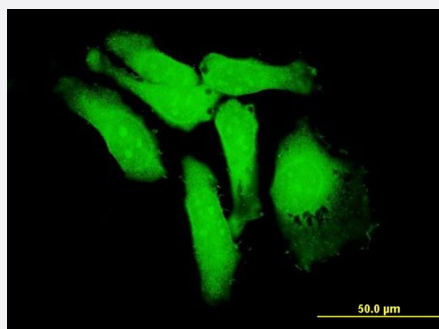


#### Western Blot (Transfected lysate)

Western Blot analysis of S100P expression in transfected 293T cell line ([H00006286-T03](#)) by S100P MaxPab polyclonal antibody.

Lane 1: S100P transfected lysate(10.56 kDa).

Lane 2: Non-transfected lysate.



#### Immunofluorescence

Immunofluorescence of purified MaxPab antibody to S100P on HeLa cell. [antibody concentration 10 ug/ml]

### Specification

Product Description	Mouse polyclonal antibody raised against a full-length human S100P protein.
Immunogen	S100P (AAH06819, 1 a.a. ~ 95 a.a) full-length human protein.
Sequence	MTELETAMGMIIDVFSRYSGSEGSTQTLTKGELKVLMEKELPGFLQSGKDKDAVDKLLKDL DANG DAQVDFSEFMFVAITSACHKYFEKAGLK
Host	Mouse
Reactivity	Human
Quality Control Testing	Antibody reactive against mammalian transfected lysate.

## Storage Buffer

In 1x PBS, pH 7.4

## Storage Instruction

Store at -20°C or lower. Aliquot to avoid repeated freezing and thawing.

## Applications

- Western Blot (Transfected lysate)

Western Blot analysis of S100P expression in transfected 293T cell line ([H00006286-T03](#)) by S100P MaxPab polyclonal antibody.

Lane 1: S100P transfected lysate(10.56 KDa).

Lane 2: Non-transfected lysate.

[Protocol Download](#)

- Immunofluorescence

Immunofluorescence of purified MaxPab antibody to S100P on HeLa cell. [antibody concentration 10 ug/ml]

## Gene Info — S100P

## Entrez GeneID

[6286](#)

## GeneBank Accession#

[BC006819](#)

## Protein Accession#

[AAH06819](#)

## Gene Name

S100P

## Gene Alias

MIG9

## Gene Description

S100 calcium binding protein P

## Omim ID

[600614](#)

## Gene Ontology

[Hyperlink](#)

## Gene Summary

The protein encoded by this gene is a member of the S100 family of proteins containing 2 EF-hand calcium-binding motifs. S100 proteins are localized in the cytoplasm and/or nucleus of a wide range of cells, and involved in the regulation of a number of cellular processes such as cell cycle progression and differentiation. S100 genes include at least 13 members which are located as a cluster on chromosome 1q21; however, this gene is located at 4p16. This protein, in addition to binding Ca<sup>2+</sup>, also binds Zn<sup>2+</sup> and Mg<sup>2+</sup>. This protein may play a role in the etiology of prostate cancer. [provided by RefSeq]

## Other Designations

OTTHUMP00000115574|S100 calcium-binding protein P|migration-inducing gene 9