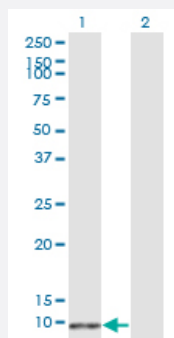


S100B monoclonal antibody (M53), clone 2A11

Catalog # H00006285-M53

Size 100 ug

Applications

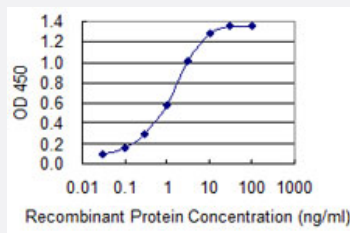


Western Blot (Transfected lysate)

Western Blot analysis of S100B expression in transfected 293T cell line by S100B monoclonal antibody (M53), clone 2A11.

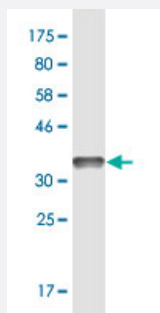
Lane 1: S100B transfected lysate (10.7 KDa).

Lane 2: Non-transfected lysate.



Sandwich ELISA (Recombinant protein)

Detection limit for recombinant GST tagged S100B is 0.03 ng/ml as a capture antibody.



Western Blot detection against Immunogen (35.86 KDa).

Specification

Product Description

Mouse monoclonal antibody raised against a full-length recombinant S100B.

Immunogen	S100B (NP_006263.1, 1 a.a. ~ 92 a.a) full-length recombinant protein with GST tag. MW of the GST tag alone is 26 KDa.
Sequence	MSELEKAMVALIDVFHQYSGREGDKHKLKKSELKELINNELSHFLEEIKEQEVVDKVMETLDNDG DGECDFAQEFMAFVAMVTTACHEFFEHE
Host	Mouse
Reactivity	Human
Interspecies Antigen Sequence	Mouse (99); Rat (98)
Isotype	IgG1 Kappa
Quality Control Testing	Antibody Reactive Against Recombinant Protein. Western Blot detection against Immunogen (35.86 KDa) .
Storage Buffer	In 1x PBS, pH 7.4
Storage Instruction	Store at -20°C or lower. Aliquot to avoid repeated freezing and thawing.

Applications

- Western Blot (Transfected lysate)

Western Blot analysis of S100B expression in transfected 293T cell line by S100B monoclonal antibody (M53), clone 2A11.

Lane 1: S100B transfected lysate(10.7 KDa).

Lane 2: Non-transfected lysate.

[Protocol Download](#)

- Western Blot (Recombinant protein)

[Protocol Download](#)

- Sandwich ELISA (Recombinant protein)

Detection limit for recombinant GST tagged S100B is 0.03 ng/ml as a capture antibody.

[Protocol Download](#)

- ELISA

Gene Info — S100B

Entrez GeneID	6285
GeneBank Accession#	NM_006272.1
Protein Accession#	NP_006263.1
Gene Name	S100B
Gene Alias	NEF, S100, S100beta
Gene Description	S100 calcium binding protein B
Omim ID	176990
Gene Ontology	Hyperlink
Gene Summary	<p>The protein encoded by this gene is a member of the S100 family of proteins containing 2 EF-hand calcium-binding motifs. S100 proteins are localized in the cytoplasm and/or nucleus of a wide range of cells, and involved in the regulation of a number of cellular processes such as cell cycle progression and differentiation. S100 genes include at least 13 members which are located as a cluster on chromosome 1q21; however, this gene is located at 21q22.3. This protein may function in Neurite extension, proliferation of melanoma cells, stimulation of Ca²⁺ fluxes, inhibition of PKC-mediated phosphorylation, astrocytosis and axonal proliferation, and inhibition of microtubule assembly. Chromosomal rearrangements and altered expression of this gene have been implicated in several neurological, neoplastic, and other types of diseases, including Alzheimer's disease, Down's syndrome, epilepsy, amyotrophic lateral sclerosis, melanoma, and type I diabetes. [provided by RefSeq]</p>
Other Designations	OTTHUMP00000174958 S-100 calcium-binding protein, beta chain S100 beta S100 calcium binding protein, beta (neural) S100 calcium-binding protein, beta S100 calcium-binding protein, beta (neural)

Disease

- [Alzheimer disease](#)
- [Bipolar Disorder](#)
- [Cognition Disorders](#)
- [Dementia](#)
- [Depressive Disorder](#)
- [Diseases in Twins](#)
- [Genetic Predisposition to Disease](#)

- [Mental Disorders](#)
- [Neuropsychological Tests](#)
- [Psychotic Disorders](#)
- [Schizophrenia](#)