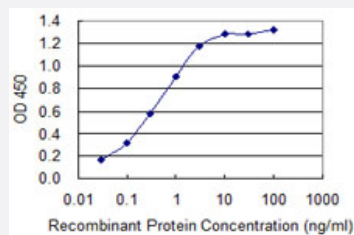


# S100B monoclonal antibody (M52), clone 2A10

Catalog # H00006285-M52

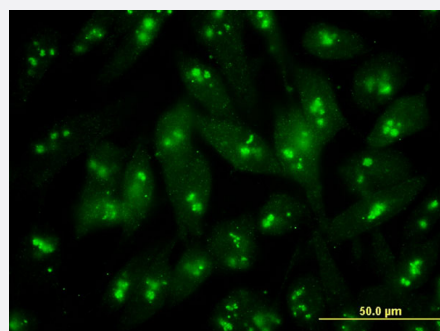
Size 100 ug

## Applications



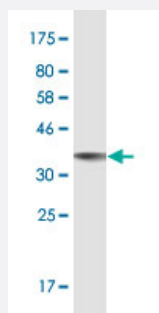
### Sandwich ELISA (Recombinant protein)

Detection limit for recombinant GST tagged S100B is 0.03 ng/ml as a capture antibody.



### Immunofluorescence

Immunofluorescence of monoclonal antibody to S100B on HeLa cell . [antibody concentration 10 ug/ml]



Western Blot detection against Immunogen (35.86 KDa) .

## Specification

### Product Description

Mouse monoclonal antibody raised against a full-length recombinant S100B.

<b>Immunogen</b>	S100B (NP_006263.1, 1 a.a. ~ 92 a.a) full-length recombinant protein with GST tag. MW of the GST tag alone is 26 KDa.
<b>Sequence</b>	MSELEKAMVALIDVFHQYSGREGDKHKLKKSELKELINNELSHFLEEIKEQEVVDKVMETLDNDGDGECDFQEFMAFVAMVTTACHEFFEHE
<b>Host</b>	Mouse
<b>Reactivity</b>	Human
<b>Interspecies Antigen Sequence</b>	Mouse (99); Rat (98)
<b>Isotype</b>	IgG1 Kappa
<b>Quality Control Testing</b>	Antibody Reactive Against Recombinant Protein. Western Blot detection against Immunogen (35.86 KDa) .
<b>Storage Buffer</b>	In 1x PBS, pH 7.4
<b>Storage Instruction</b>	Store at -20°C or lower. Aliquot to avoid repeated freezing and thawing.

## Applications

- Western Blot (Recombinant protein)

[Protocol Download](#)

- Sandwich ELISA (Recombinant protein)

Detection limit for recombinant GST tagged S100B is 0.03 ng/ml as a capture antibody.

[Protocol Download](#)

- ELISA

- Immunofluorescence

Immunofluorescence of monoclonal antibody to S100B on HeLa cell . [antibody concentration 10 ug/ml]

## Gene Info — S100B

<b>Entrez GeneID</b>	<a href="#">6285</a>
<b>GeneBank Accession#</b>	<a href="#">NM_006272.1</a>

Protein Accession#	<a href="#">NP_006263.1</a>
Gene Name	S100B
Gene Alias	NEF, S100, S100beta
Gene Description	S100 calcium binding protein B
Omim ID	<a href="#">176990</a>
Gene Ontology	<a href="#">Hyperlink</a>
Gene Summary	<p>The protein encoded by this gene is a member of the S100 family of proteins containing 2 EF-hand calcium-binding motifs. S100 proteins are localized in the cytoplasm and/or nucleus of a wide range of cells, and involved in the regulation of a number of cellular processes such as cell cycle progression and differentiation. S100 genes include at least 13 members which are located as a cluster on chromosome 1q21; however, this gene is located at 21q22.3. This protein may function in Neurite extension, proliferation of melanoma cells, stimulation of Ca<sup>2+</sup> fluxes, inhibition of PKC-mediated phosphorylation, astrocytosis and axonal proliferation, and inhibition of microtubule assembly. Chromosomal rearrangements and altered expression of this gene have been implicated in several neurological, neoplastic, and other types of diseases, including Alzheimer's disease, Down's syndrome, epilepsy, amyotrophic lateral sclerosis, melanoma, and type I diabetes. [provided by RefSeq]</p>
Other Designations	OTTHUMP00000174958 S-100 calcium-binding protein, beta chain S100 beta S100 calcium binding protein, beta (neural) S100 calcium-binding protein, beta S100 calcium-binding protein, beta (neural)

## Publication Reference

- [Magnetic bead-quantum dot assay for detection of a biomarker for traumatic brain injury.](#)

Kim C, Searson PC.

Nanoscale 2015 Nov; 7(42):17820.

Application: Func, Human, Serum

## Disease

- [Alzheimer disease](#)
- [Bipolar Disorder](#)
- [Cognition Disorders](#)
- [Dementia](#)
- [Depressive Disorder](#)

- [Diseases in Twins](#)
- [Genetic Predisposition to Disease](#)
- [Mental Disorders](#)
- [Neuropsychological Tests](#)
- [Psychotic Disorders](#)
- [Schizophrenia](#)