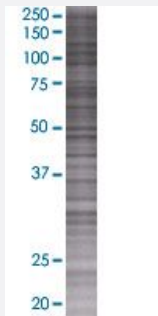


S100A13 293T Cell Transient Overexpression Lysate(Denatured)

Catalog # H00006284-T01

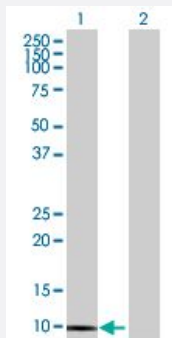
Size 100 uL

Applications



SDS-PAGE Gel

S100A13 transfected lysate.



Western Blot

Lane 1: S100A13 transfected lysate (10.89 KDa)

Lane 2: Non-transfected lysate.

Specification

Transfected Cell Line	293T
Plasmid	pCMV-S100A13 full-length
Host	Human
Theoretical MW (kDa)	10.89
Quality Control Testing	<p>Transient overexpression cell lysate was tested with Anti-S100A13 antibody (H00006284-B01) by Western Blots.</p> <p>SDS-PAGE Gel</p> <p>S100A13 transfected lysate.</p> <p>Western Blot</p> <p>Lane 1: S100A13 transfected lysate (10.89 KDa)</p> <p>Lane 2: Non-transfected lysate.</p>

Storage Buffer

1X Sample Buffer (50 mM Tris-HCl, 2% SDS, 10% glycerol, 300 mM 2-mercaptoethanol, 0.01% Bromophenol blue)

Storage Instruction

Store at -80°C. Aliquot to avoid repeated freezing and thawing.

Applications

- Western Blot

Gene Info — S100A13

Entrez GeneID[6284](#)**GeneBank Accession#**[NM_001024210.1](#)**Protein Accession#**[NP_001019381.1](#)**Gene Name**

S100A13

Gene Alias

-

Gene Description

S100 calcium binding protein A13

Omim ID[601989](#)**Gene Ontology**[Hyperlink](#)**Gene Summary**

The protein encoded by this gene is a member of the S100 family of proteins containing 2 EF-hand calcium-binding motifs. S100 proteins are localized in the cytoplasm and/or nucleus of a wide range of cells, and involved in the regulation of a number of cellular processes such as cell cycle progression and differentiation. S100 genes include at least 13 members which are located as a cluster on chromosome 1q21. This protein is widely expressed in various types of tissues with a high expression level in thyroid gland. In smooth muscle cells, this protein co-expresses with other family members in the nucleus and in stress fibers, suggesting diverse functions in signal transduction. Multiple alternatively spliced transcript variants encoding the same protein have been found for this gene. [provided by RefSeq]

Other Designations

OTTHUMP00000034802|S100 calcium-binding protein A13