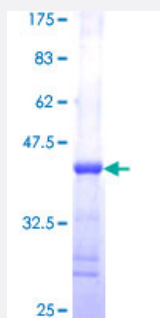


# S100A13 (Human) Recombinant Protein (Q01)

Catalog # H00006284-Q01

Size 25 ug, 10 ug

## Applications



## Specification

<b>Product Description</b>	Human S100A13 partial ORF ( NP_005970, 1 a.a. - 98 a.a.) recombinant protein with GST-tag at N-terminal.
<b>Sequence</b>	MAAEPLTELEESIETVVTTFFTFARQEGRKDSLVSNEFKELVTQQLPHLLKDVGSLDEKMKSLDV NQDSELFNEYWRLIGELAKEIRKKKDLKIRKK
<b>Host</b>	Wheat Germ (in vitro)
<b>Theoretical MW (kDa)</b>	36.52
<b>Preparation Method</b>	<a href="#">in vitro wheat germ expression system</a>
<b>Purification</b>	Glutathione Sepharose 4 Fast Flow
<b>Quality Control Testing</b>	12.5% SDS-PAGE Stained with Coomassie Blue.
<b>Storage Buffer</b>	50 mM Tris-HCl, 10 mM reduced Glutathione, pH=8.0 in the elution buffer.
<b>Storage Instruction</b>	Store at -80°C. Aliquot to avoid repeated freezing and thawing.
<b>Note</b>	Best use within three months from the date of receipt of this protein.

## Applications

- Enzyme-linked Immunoabsorbent Assay
- Western Blot (Recombinant protein)
- Antibody Production
- Protein Array

## Gene Info — S100A13

Entrez GeneID [6284](#)

GeneBank Accession# [NM\\_005979](#)

Protein Accession# [NP\\_005970](#)

Gene Name S100A13

Gene Alias -

Gene Description S100 calcium binding protein A13

Omim ID [601989](#)

Gene Ontology [Hyperlink](#)

**Gene Summary**

The protein encoded by this gene is a member of the S100 family of proteins containing 2 EF-hand calcium-binding motifs. S100 proteins are localized in the cytoplasm and/or nucleus of a wide range of cells, and involved in the regulation of a number of cellular processes such as cell cycle progression and differentiation. S100 genes include at least 13 members which are located as a cluster on chromosome 1q21. This protein is widely expressed in various types of tissues with a high expression level in thyroid gland. In smooth muscle cells, this protein co-expresses with other family members in the nucleus and in stress fibers, suggesting diverse functions in signal transduction. Multiple alternatively spliced transcript variants encoding the same protein have been found for this gene. [provided by RefSeq]

**Other Designations** OTTHUMP00000034802|S100 calcium-binding protein A13