

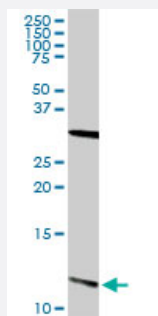
MaxPab®

# S100A13 purified MaxPab rabbit polyclonal antibody (D01P)

Catalog # H00006284-D01P

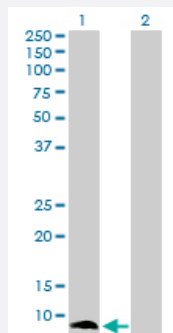
Size 100 ug

## Applications



### Western Blot (Tissue lysate)

S100A13 MaxPab rabbit polyclonal antibody. Western Blot analysis of S100A13 expression in human kidney.



### Western Blot (Transfected lysate)

Western Blot analysis of S100A13 expression in transfected 293T cell line ([H00006284-T01](#)) by S100A13 MaxPab polyclonal antibody.

Lane 1: S100A13 transfected lysate(11.50 KDa).

Lane 2: Non-transfected lysate.

## Specification

|                         |   |
|-------------------------|---|
| Product Description     | Rabbit polyclonal antibody raised against a full-length human S100A13 protein.                        |
| Immunogen               | S100A13 (NP_001019381.1, 1 a.a. ~ 98 a.a) full-length human protein.                                  |
| Sequence                | MAAEPLTELEESIETVVTFFTFARQEGRKDSLVSNEFKELVTQQLPHLLKDVGSLDEKMKSLDV<br>NQDSELKFNEYWRLIGELAKEIRKKKDLKIRKK |
| Host                    | Rabbit  |
| Reactivity              | Human   |
| Quality Control Testing | Antibody reactive against mammalian transfected lysate.   |

**Storage Buffer**

In 1x PBS, pH 7.4

**Storage Instruction**

Store at -20°C or lower. Aliquot to avoid repeated freezing and thawing.

## Applications

- Western Blot (Tissue lysate)

S100A13 MaxPab rabbit polyclonal antibody. Western Blot analysis of S100A13 expression in human kidney.

[Protocol Download](#)

- Western Blot (Transfected lysate)

Western Blot analysis of S100A13 expression in transfected 293T cell line ([H00006284-T01](#)) by S100A13 MaxPab polyclonal antibody.

Lane 1: S100A13 transfected lysate(11.50 KDa).

Lane 2: Non-transfected lysate.

[Protocol Download](#)

## Gene Info — S100A13

**Entrez GeneID**[6284](#)**GeneBank Accession#**[NM\\_001024210.1](#)**Protein Accession#**[NP\\_001019381.1](#)**Gene Name**

S100A13

**Gene Alias**

-

**Gene Description**

S100 calcium binding protein A13

**Omim ID**[601989](#)**Gene Ontology**[Hyperlink](#)

**Gene Summary**

The protein encoded by this gene is a member of the S100 family of proteins containing 2 EF-hand calcium-binding motifs. S100 proteins are localized in the cytoplasm and/or nucleus of a wide range of cells, and involved in the regulation of a number of cellular processes such as cell cycle progression and differentiation. S100 genes include at least 13 members which are located as a cluster on chromosome 1q21. This protein is widely expressed in various types of tissues with a high expression level in thyroid gland. In smooth muscle cells, this protein co-expresses with other family members in the nucleus and in stress fibers, suggesting diverse functions in signal transduction. Multiple alternatively spliced transcript variants encoding the same protein have been found for this gene. [provided by RefSeq]

**Other Designations**

OTTHUMP00000034802|S100 calcium-binding protein A13