

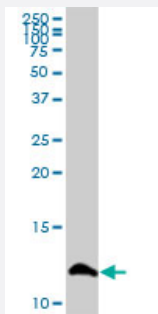
MaxPab®

S100A13 MaxPab mouse polyclonal antibody (B01P)

Catalog # H00006284-B01P

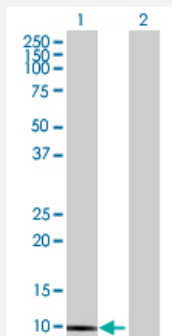
Size 50 ug

Applications



Western Blot (Cell lysate)

S100A13 MaxPab polyclonal antibody. Western Blot analysis of S100A13 expression in HepG2.

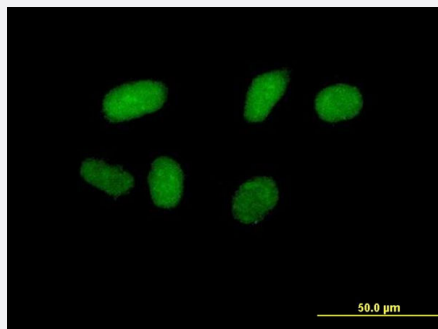


Western Blot (Transfected lysate)

Western Blot analysis of S100A13 expression in transfected 293T cell line ([H00006284-T01](#)) by S100A13 MaxPab polyclonal antibody.

Lane 1: S100A13 transfected lysate(10.78 KDa).

Lane 2: Non-transfected lysate.



Immunofluorescence

Immunofluorescence of purified MaxPab antibody to S100A13 on HeLa cell. [antibody concentration 10 ug/ml]

Specification

Product Description

Mouse polyclonal antibody raised against a full-length human S100A13 protein.

Immunogen	S100A13 (NP_001019381.1, 1 a.a. ~ 98 a.a) full-length human protein.
Sequence	MAAEPLTELEESIETVVTTFFTFARQEGRKDSLSVNEFKELVTQQLPHLLKDVGSLDEKMKSLDV NQDSELKFNEYWRLIGELAKEIRKKKDLKIRKK
Host	Mouse
Reactivity	Human
Quality Control Testing	Antibody reactive against mammalian transfected lysate.
Storage Buffer	In 1x PBS, pH 7.4
Storage Instruction	Store at -20°C or lower. Aliquot to avoid repeated freezing and thawing.

Applications

- Western Blot (Cell lysate)

S100A13 MaxPab polyclonal antibody. Western Blot analysis of S100A13 expression in HepG2.

[Protocol Download](#)

- Western Blot (Transfected lysate)

Western Blot analysis of S100A13 expression in transfected 293T cell line ([H00006284-T01](#)) by S100A13 MaxPab polyclonal antibody.

Lane 1: S100A13 transfected lysate(10.78 KDa).

Lane 2: Non-transfected lysate.

[Protocol Download](#)

- Immunofluorescence

Immunofluorescence of purified MaxPab antibody to S100A13 on HeLa cell. [antibody concentration 10 ug/ml]

Gene Info — S100A13

Entrez GeneID	6284
GeneBank Accession#	NM_001024210.1
Protein Accession#	NP_001019381.1
Gene Name	S100A13
Gene Alias	-

Gene Description	S100 calcium binding protein A13
Omim ID	601989
Gene Ontology	Hyperlink
Gene Summary	<p>The protein encoded by this gene is a member of the S100 family of proteins containing 2 EF-hand calcium-binding motifs. S100 proteins are localized in the cytoplasm and/or nucleus of a wide range of cells, and involved in the regulation of a number of cellular processes such as cell cycle progression and differentiation. S100 genes include at least 13 members which are located as a cluster on chromosome 1q21. This protein is widely expressed in various types of tissues with a high expression level in thyroid gland. In smooth muscle cells, this protein co-expresses with other family members in the nucleus and in stress fibers, suggesting diverse functions in signal transduction. Multiple alternatively spliced transcript variants encoding the same protein have been found for this gene. [provided by RefSeq]</p>
Other Designations	OTTHUMP00000034802 S100 calcium-binding protein A13