

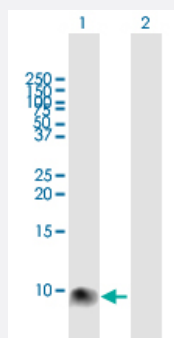
MaxPab®

S100A12 purified MaxPab mouse polyclonal antibody (B01P)

Catalog # H00006283-B01P

Size 50 ug

Applications



Western Blot (Transfected lysate)

Western Blot analysis of S100A12 expression in transfected 293T cell line ([H00006283-T01](#)) by S100A12 MaxPab polyclonal antibody.

Lane 1: S100A12 transfected lysate(10.12 KDa).

Lane 2: Non-transfected lysate.

Specification

Product Description	Mouse polyclonal antibody raised against a full-length human S100A12 protein.
Immunogen	S100A12 (NP_005612.1, 1 a.a. ~ 92 a.a) full-length human protein.
Sequence	MTKLEEHLEGVNIFHQYSVRKGHFDLSKGELKQLLTKEANTIKNIKDKAVIDEIFQGLDANQDEQ VDFQEFISLVAIALKAAHYHTHKE
Host	Mouse
Reactivity	Human
Quality Control Testing	Antibody reactive against mammalian transfected lysate.
Storage Buffer	In 1x PBS, pH 7.4
Storage Instruction	Store at -20°C or lower. Aliquot to avoid repeated freezing and thawing.

Applications

- Western Blot (Transfected lysate)

Western Blot analysis of S100A12 expression in transfected 293T cell line ([H00006283-T01](#)) by S100A12 MaxPab polyclonal antibody.

Lane 1: S100A12 transfected lysate(10.12 KDa).

Lane 2: Non-transfected lysate.

[Protocol Download](#)

Gene Info — S100A12

Entrez GeneID [6283](#)

GeneBank Accession# [NM_005621.1](#)

Protein Accession# [NP_005612.1](#)

Gene Name S100A12

Gene Alias CAAF1, CAGC, CGRP, ENRAGE, MRP6, p6

Gene Description S100 calcium binding protein A12

Omim ID [603112](#)

Gene Ontology [Hyperlink](#)

Gene Summary The protein encoded by this gene is a member of the S100 family of proteins containing 2 EF-hand calcium-binding motifs. S100 proteins are localized in the cytoplasm and/or nucleus of a wide range of cells, and involved in the regulation of a number of cellular processes such as cell cycle progression and differentiation. S100 genes include at least 13 members which are located as a cluster on chromosome 1q21. This protein is proposed to be involved in specific calcium-dependent signal transduction pathways and its regulatory effect on cytoskeletal components may modulate various neutrophil activities. [provided by RefSeq]

Other Designations OTTHUMP00000015332|S100 calcium-binding protein A12|S100 calcium-binding protein A12 (calgranulin C)|calgranulin C

Disease

- [Kidney Calculi](#)