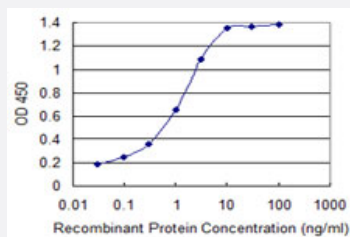


S100A11 monoclonal antibody (M17), clone 1B12

Catalog # H00006282-M17

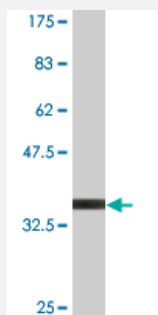
Size 100 ug

Applications



Sandwich ELISA (Recombinant protein)

Detection limit for recombinant GST tagged S100A11 is 0.03 ng/ml as a capture antibody.



Western Blot detection against Immunogen (34.21 KDa) .

Specification

Product Description

Mouse monoclonal antibody raised against a partial recombinant S100A11.

Immunogen

S100A11 (AAH14354.1, 10 a.a. ~ 87 a.a) partial recombinant protein with GST tag. MW of the GST tag alone is 26 KDa.

Sequence

TERCIESLIAVFQKYAGKDGNYTLSTKTEFLSFMNTELAFTKNQKDPGVLDMMKKLDTNSDGQ
LDFSEFLNLIGGL

Host

Mouse

Reactivity

Human

Interspecies Antigen Sequence	Rat (91)
Isotype	IgG2a Kappa
Quality Control Testing	Antibody Reactive Against Recombinant Protein. Western Blot detection against Immunogen (34.21 KDa) .
Storage Buffer	In 1x PBS, pH 7.4
Storage Instruction	Store at -20°C or lower. Aliquot to avoid repeated freezing and thawing.

Applications

- Western Blot (Recombinant protein)

[Protocol Download](#)

- Sandwich ELISA (Recombinant protein)

Detection limit for recombinant GST tagged S100A11 is 0.03 ng/ml as a capture antibody.

[Protocol Download](#)

- ELISA

Gene Info — S100A11

Entrez GeneID	6282
GeneBank Accession#	BC014354
Protein Accession#	AAH14354.1
Gene Name	S100A11
Gene Alias	MLN70, S100C
Gene Description	S100 calcium binding protein A11
Omim ID	603114
Gene Ontology	Hyperlink

Gene Summary

The protein encoded by this gene is a member of the S100 family of proteins containing 2 EF-hand calcium-binding motifs. S100 proteins are localized in the cytoplasm and/or nucleus of a wide range of cells, and involved in the regulation of a number of cellular processes such as cell cycle progression and differentiation. S100 genes include at least 13 members which are located as a cluster on chromosome 1q21. This protein may function in motility, invasion, and tubulin polymerization. Chromosomal rearrangements and altered expression of this gene have been implicated in tumor metastasis. [provided by RefSeq]

Other Designations

OTTHUMP00000015271|S100 calcium-binding protein A11 (calgizzarin)|calgizzarin

Disease

- [Tobacco Use Disorder](#)