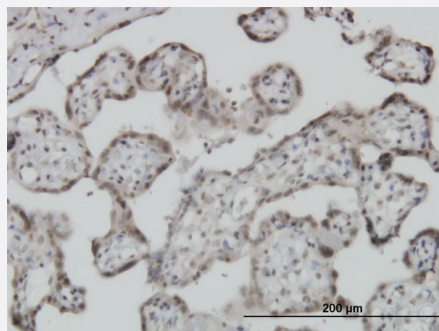


# S100A11 monoclonal antibody (M01), clone 2F4

Catalog # H00006282-M01

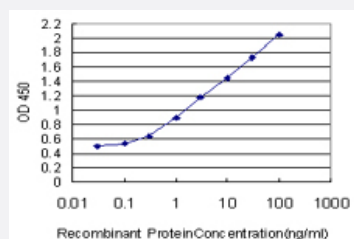
Size 100 ug

## Applications



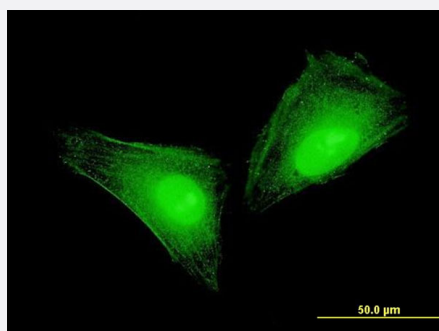
### Immunohistochemistry (Formalin/PFA-fixed paraffin-embedded sections)

Immunoperoxidase of monoclonal antibody to S100A11 on formalin-fixed paraffin-embedded human placenta. [antibody concentration 3 ug/ml]



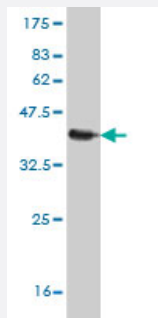
### Sandwich ELISA (Recombinant protein)

Detection limit for recombinant GST tagged S100A11 is approximately 0.03ng/ml as a capture antibody.



### Immunofluorescence

Immunofluorescence of monoclonal antibody to S100A11 on HeLa cell . [antibody concentration 10 ug/ml]



Western Blot detection against Immunogen (37.29 KDa) .

## Specification

<b>Product Description</b>	Mouse monoclonal antibody raised against a full length recombinant S100A11.
<b>Immunogen</b>	S100A11 (AAH14354, 1 a.a. ~ 105 a.a) full-length recombinant protein with GST tag. MW of the GST tag alone is 26 KDa.
<b>Sequence</b>	MAKISSPTETERCIESLIAVFQKYAGKDGNYTLSTKTEFLSFMNTELAaftKNQKDPGVLDMMKK LDTNSDGQLDFSEFLNLIGGLAMACHDSFLKAVPSQKRT
<b>Host</b>	Mouse
<b>Reactivity</b>	Human
<b>Interspecies Antigen Sequence</b>	Rat (87)
<b>Isotype</b>	IgG2a Kappa
<b>Quality Control Testing</b>	Antibody Reactive Against Recombinant Protein. Western Blot detection against Immunogen (37.29 KDa) .
<b>Storage Buffer</b>	In 1x PBS, pH 7.4
<b>Storage Instruction</b>	Store at -20°C or lower. Aliquot to avoid repeated freezing and thawing.

## Applications

- Western Blot (Recombinant protein)

[Protocol Download](#)

- Immunohistochemistry (Formalin/PFA-fixed paraffin-embedded sections)

Immunoperoxidase of monoclonal antibody to S100A11 on formalin-fixed paraffin-embedded human placenta. [antibody concentration 3 ug/ml]

[Protocol Download](#)

- Sandwich ELISA (Recombinant protein)

Detection limit for recombinant GST tagged S100A11 is approximately 0.03ng/ml as a capture antibody.

[Protocol Download](#)

- ELISA

- Immunofluorescence

Immunofluorescence of monoclonal antibody to S100A11 on HeLa cell . [antibody concentration 10 ug/ml]

## Gene Info — S100A11

Entrez GeneID [6282](#)

GeneBank Accession# [BC014354](#)

Protein Accession# [AAH14354](#)

Gene Name S100A11

Gene Alias MLN70, S100C

Gene Description S100 calcium binding protein A11

Omim ID [603114](#)

Gene Ontology [Hyperlink](#)

**Gene Summary**

The protein encoded by this gene is a member of the S100 family of proteins containing 2 EF-hand calcium-binding motifs. S100 proteins are localized in the cytoplasm and/or nucleus of a wide range of cells, and involved in the regulation of a number of cellular processes such as cell cycle progression and differentiation. S100 genes include at least 13 members which are located as a cluster on chromosome 1q21. This protein may function in motility, invasion, and tubulin polymerization. Chromosomal rearrangements and altered expression of this gene have been implicated in tumor metastasis. [provided by RefSeq]

**Other Designations** OTTHUMP00000015271|S100 calcium-binding protein A11 (calgizzarin)|calgizzarin

## Publication Reference

- [S100A expression in normal corneal-limbal epithelial cells and ocular surface squamous cell carcinoma tissue.](#)

Li J, Riau AK, Setiawan M, Mehta JS, Ti SE, Tong L, Tan DT, Beuerman RW.

Molecular Vision 2011 Aug; 17:2263.

Application: IF, Human, Corneal-limbal epithelial cells, Ocular surface squamous cell carcinoma tissues

## Disease

- [Tobacco Use Disorder](#)