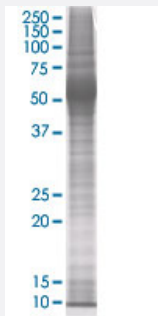


S100A10 293T Cell Transient Overexpression Lysate(Denatured)

Catalog # H00006281-T01

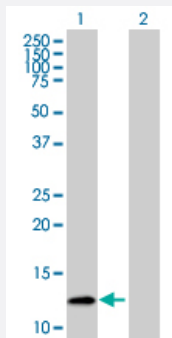
Size 100 uL

Applications



SDS-PAGE Gel

S100A10 transfected lysate



Western Blot

Lane 1: S100A10 transfected lysate (10.78 kDa).

Lane 2: Non-transfected lysate.

Specification

Transfected Cell Line	293T
Plasmid	pCMV-S100A10 full-length
Host	Human
Theoretical MW (kDa)	10.78
Interspecies Antigen Sequence	Mouse (92); Rat (91)

Quality Control Testing

Transient overexpression cell lysate was tested with Anti-S100A10 antibody ([H00006281-B01](#)) by Western Blots.
SDS-PAGE Gel
S100A10 transfected lysate
Western Blot
Lane 1: S100A10 transfected lysate (10.78 KDa).
Lane 2: Non-transfected lysate.

Storage Buffer

1X Sample Buffer (50 mM Tris-HCl, 2% SDS, 10% glycerol, 300 mM 2-mercaptoethanol, 0.01% Bromophenol blue)

Storage Instruction

Store at -80°C. Aliquot to avoid repeated freezing and thawing.

Applications

- Western Blot

Gene Info — S100A10

Entrez GeneID

[6281](#)

GeneBank Accession#

[BC015973](#)

Protein Accession#

[AAH15973](#)

Gene Name

S100A10

Gene Alias

42C, ANX2L, ANX2LG, CAL1L, CLP11, Ca[1], GP11, MGC111133, P11, p10

Gene Description

S100 calcium binding protein A10

Omim ID

[114085](#)

Gene Ontology

[Hyperlink](#)

Gene Summary

The protein encoded by this gene is a member of the S100 family of proteins containing 2 EF-hand calcium-binding motifs. S100 proteins are localized in the cytoplasm and/or nucleus of a wide range of cells, and involved in the regulation of a number of cellular processes such as cell cycle progression and differentiation. S100 genes include at least 13 members which are located as a cluster on chromosome 1q21. This protein may function in exocytosis and endocytosis. [provided by RefSeq]

Other Designations

OTTHUMP00000015269|OTTHUMP00000015270|S100 calcium binding protein A10 (annexin II ligand, calpactin I, light polypeptide (p11))|S100 calcium-binding protein A10 (annexin II ligand, calpactin I, light polypeptide (p11))|annexin II ligand, calpactin I, lig

Disease

- [Depressive Disorder](#)
- [Dermatitis](#)
- [Genetic Predisposition to Disease](#)
- [Thyroid Neoplasms](#)