

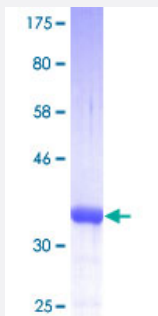
Full-Length

S100A10 (Human) Recombinant Protein (P01)

Catalog # H00006281-P01

Size 25 ug, 10 ug

Applications



Specification

Product Description	Human S100A10 full-length ORF (AAH15973, 1 a.a. - 97 a.a.) recombinant protein with GST-tag at N-terminal.
Sequence	MPSQMEHAMETMMFTFHKFAGDKGYLTKEDLRVLMEKEFPGFLENQKDPLAVDKIMKDLDQCR DGKVGFGSFFSLIAGLTIACNDYFVVHMKQKGKK
Host	Wheat Germ (in vitro)
Theoretical MW (kDa)	36.41
Interspecies Antigen Sequence	Mouse (92); Rat (91)
Preparation Method	in vitro wheat germ expression system
Purification	Glutathione Sepharose 4 Fast Flow
Quality Control Testing	12.5% SDS-PAGE Stained with Coomassie Blue.
Storage Buffer	50 mM Tris-HCl, 10 mM reduced Glutathione, pH=8.0 in the elution buffer.
Storage Instruction	Store at -80°C. Aliquot to avoid repeated freezing and thawing.
Note	Best use within three months from the date of receipt of this protein.

Applications

- Enzyme-linked Immunoabsorbent Assay
- Western Blot (Recombinant protein)
- Antibody Production
- Protein Array

Gene Info — S100A10

Entrez GeneID	6281
GeneBank Accession#	BC015973
Protein Accession#	AAH15973
Gene Name	S100A10
Gene Alias	42C, ANX2L, ANX2LG, CAL1L, CLP11, Ca[1], GP11, MGC111133, P11, p10
Gene Description	S100 calcium binding protein A10
Omim ID	114085
Gene Ontology	Hyperlink
Gene Summary	<p>The protein encoded by this gene is a member of the S100 family of proteins containing 2 EF-hand calcium-binding motifs. S100 proteins are localized in the cytoplasm and/or nucleus of a wide range of cells, and involved in the regulation of a number of cellular processes such as cell cycle progression and differentiation. S100 genes include at least 13 members which are located as a cluster on chromosome 1q21. This protein may function in exocytosis and endocytosis. [provided by RefSeq]</p>
Other Designations	OTTHUMP00000015269 OTTHUMP00000015270 S100 calcium binding protein A10 (annexin II ligand, calpactin I, light polypeptide (p11)) S100 calcium-binding protein A10 (annexin II ligand, calpactin I, light polypeptide (p11)) annexin II ligand, calpactin I, lig

Publication Reference

- [Prevalence of anti-S100A10 antibodies in antiphospholipid syndrome patients.](#)

Salle V, Sagnier A, Diouf M, Schmidt J, Smail A, Galmiche A, Herpe YE, Duhaut P.

Thrombosis Research 2019 Jul; 179:15.

Application: ELISA, N/A, Recombinant protein

- [Chemotactic Activity of S100A7 \(Psoriasin\) Is Mediated by the Receptor for Advanced Glycation End Products and Potentiates Inflammation with Highly Homologous but Functionally Distinct S100A15.](#)

Wolf R, Howard OM, Dong HF, Voscopoulos C, Boeshans K, Winston J, Divi R, Gunsior M, Goldsmith P, Ahvazi B, Chavakis T, Oppenheim JJ, Yuspa SH.

Journal of Immunology 2008 Jul; 181(2):1499.

- [Factor Xa binding to annexin 2 mediates signal transduction via protease-activated receptor 1.](#)

Bhattacharjee G, Ahamed J, Pawlinski R, Liu C, Mackman N, Ruf W, Edgington TS.

Circulation Research 2008 Jan; 102(4):457.

Application: PI, Human, HUVEC

Disease

- [Depressive Disorder](#)
- [Dermatitis](#)
- [Genetic Predisposition to Disease](#)
- [Thyroid Neoplasms](#)