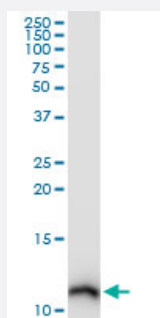


# S100A10 monoclonal antibody (M09), clone 3E10

Catalog # H00006281-M09

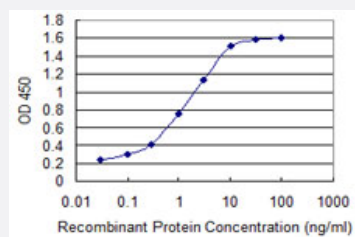
Size 100 ug

## Applications



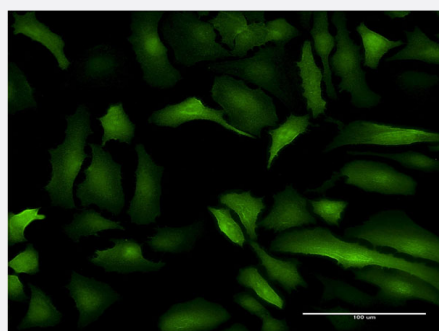
### Western Blot (Cell lysate)

S100A10 monoclonal antibody (M09), clone 3E10. Western Blot analysis of S100A10 expression in HeLa (Cat # L013V1 ).



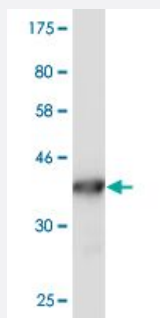
### Sandwich ELISA (Recombinant protein)

Detection limit for recombinant GST tagged S100A10 is 0.03 ng/ml as a capture antibody.



### Immunofluorescence

Immunofluorescence of monoclonal antibody to S100A10 on HeLa cell .  
[antibody concentration 10 ug/ml]



Western Blot detection against Immunogen (36.41 KDa) .

## Specification

<b>Product Description</b>	Mouse monoclonal antibody raised against a full-length recombinant S100A10.
<b>Immunogen</b>	S100A10 (AAH15973, 1 a.a. ~ 97 a.a) full-length recombinant protein with GST tag. MW of the GST tag alone is 26 KDa.
<b>Sequence</b>	MPSQMEHAMETMMFTFHKFAGDKGYLTKEDLRVLMEKEFPGFLENQKDPLAVDKIMKDLDQCR DGKVGFGSFFSLIAGLTIACNDYFVVHMKQKGKK
<b>Host</b>	Mouse
<b>Reactivity</b>	Human
<b>Interspecies Antigen Sequence</b>	Mouse (92); Rat (91)
<b>Isotype</b>	IgG2a Kappa
<b>Quality Control Testing</b>	Antibody Reactive Against Recombinant Protein. Western Blot detection against Immunogen (36.41 KDa) .
<b>Storage Buffer</b>	In 1x PBS, pH 7.4
<b>Storage Instruction</b>	Store at -20°C or lower. Aliquot to avoid repeated freezing and thawing.

## Applications

- Western Blot (Cell lysate)

S100A10 monoclonal antibody (M09), clone 3E10. Western Blot analysis of S100A10 expression in HeLa(Cat # L013V1 ).

[Protocol Download](#)

- Western Blot (Recombinant protein)

[Protocol Download](#)

- Sandwich ELISA (Recombinant protein)

Detection limit for recombinant GST tagged S100A10 is 0.03 ng/ml as a capture antibody.

[Protocol Download](#)

- ELISA

- Immunofluorescence

Immunofluorescence of monoclonal antibody to S100A10 on HeLa cell . [antibody concentration 10 ug/ml]

## Gene Info — S100A10

Entrez GeneID [6281](#)

GeneBank Accession# [BC015973](#)

Protein Accession# [AAH15973](#)

Gene Name S100A10

Gene Alias 42C, ANX2L, ANX2LG, CAL1L, CLP11, Ca[1], GP11, MGC111133, P11, p10

Gene Description S100 calcium binding protein A10

Omim ID [114085](#)

Gene Ontology [Hyperlink](#)

**Gene Summary** The protein encoded by this gene is a member of the S100 family of proteins containing 2 EF-hand calcium-binding motifs. S100 proteins are localized in the cytoplasm and/or nucleus of a wide range of cells, and involved in the regulation of a number of cellular processes such as cell cycle progression and differentiation. S100 genes include at least 13 members which are located as a cluster on chromosome 1q21. This protein may function in exocytosis and endocytosis. [provided by RefSeq]

**Other Designations** OTTHUMP00000015269|OTTHUMP00000015270|S100 calcium binding protein A10 (annexin II ligand, calpactin I, light polypeptide (p11))|S100 calcium-binding protein A10 (annexin II ligand, calpactin I, light polypeptide (p11))|annexin II ligand, calpactin I, lig

## Disease

- [Depressive Disorder](#)
- [Dermatitis](#)
- [Genetic Predisposition to Disease](#)
- [Thyroid Neoplasms](#)