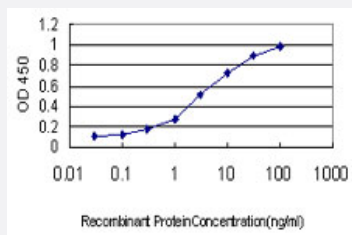


S100A10 monoclonal antibody (M01), clone 4D2-F1

Catalog # H00006281-M01

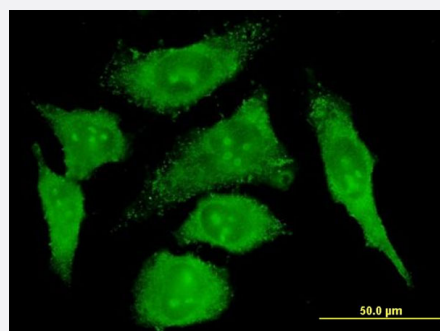
Size 100 ug

Applications



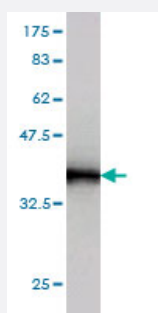
Sandwich ELISA (Recombinant protein)

Detection limit for recombinant GST tagged S100A10 is approximately 0.1ng/ml as a capture antibody.



Immunofluorescence

Immunofluorescence of monoclonal antibody to S100A10 on HeLa cell .
[antibody concentration 10 ug/ml]



Western Blot detection against Immunogen (36.41 KDa) .

Specification

Product Description

Mouse monoclonal antibody raised against a full length recombinant S100A10.

Immunogen	S100A10 (AAH15973, 1 a.a. ~ 97 a.a) full-length recombinant protein with GST tag. MW of the GST tag alone is 26 KDa.
Sequence	MPSQMEHAMETMMFTFHKFAGDKGYLTKEDLRVLMEKEFPGFLENQKDPLAVDKIMKDLDQCR DGKVGFGSFFSLIAGLTACNDYFVVHMKQKGKK
Host	Mouse
Reactivity	Human
Interspecies Antigen Sequence	Mouse (92); Rat (91)
Isotype	IgG1 Kappa
Quality Control Testing	Antibody Reactive Against Recombinant Protein. Western Blot detection against Immunogen (36.41 KDa) .
Storage Buffer	In 1x PBS, pH 7.4
Storage Instruction	Store at -20°C or lower. Aliquot to avoid repeated freezing and thawing.

Applications

- Western Blot (Recombinant protein)

[Protocol Download](#)

- Sandwich ELISA (Recombinant protein)

Detection limit for recombinant GST tagged S100A10 is approximately 0.1ng/ml as a capture antibody.

[Protocol Download](#)

- ELISA

- Immunofluorescence

Immunofluorescence of monoclonal antibody to S100A10 on HeLa cell . [antibody concentration 10 ug/ml]

Gene Info — S100A10

Entrez GeneID [6281](#)

GeneBank Accession# [BC015973](#)

Protein Accession#	AAH15973
Gene Name	S100A10
Gene Alias	42C, ANX2L, ANX2LG, CAL1L, CLP11, Ca[1], GP11, MGC111133, P11, p10
Gene Description	S100 calcium binding protein A10
Omim ID	114085
Gene Ontology	Hyperlink
Gene Summary	The protein encoded by this gene is a member of the S100 family of proteins containing 2 EF-hand calcium-binding motifs. S100 proteins are localized in the cytoplasm and/or nucleus of a wide range of cells, and involved in the regulation of a number of cellular processes such as cell cycle progression and differentiation. S100 genes include at least 13 members which are located as a cluster on chromosome 1q21. This protein may function in exocytosis and endocytosis. [provided by RefSeq]
Other Designations	OTTHUMP00000015269 OTTHUMP00000015270 S100 calcium binding protein A10 (annexin II ligand, calpactin I, light polypeptide (p11)) S100 calcium-binding protein A10 (annexin II ligand, calpactin I, light polypeptide (p11)) annexin II ligand, calpactin I, lig

Disease

- [Depressive Disorder](#)
- [Dermatitis](#)
- [Genetic Predisposition to Disease](#)
- [Thyroid Neoplasms](#)