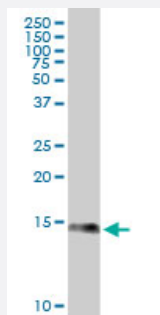


S100A9 monoclonal antibody (M11), clone 4G9

Catalog # H00006280-M11

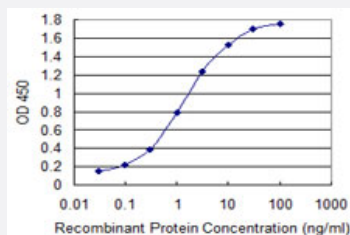
Size 100 ug

Applications



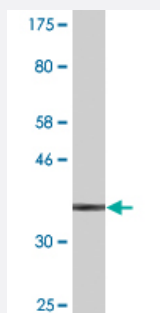
Western Blot (Tissue lysate)

S100A9 monoclonal antibody (M11), clone 4G9. Western Blot analysis of S100A9 expression in human kidney.



Sandwich ELISA (Recombinant protein)

Detection limit for recombinant GST tagged S100A9 is 0.03 ng/ml as a capture antibody.



Western Blot detection against Immunogen (38.28 KDa) .

Specification

Product Description

Mouse monoclonal antibody raised against a full-length recombinant S100A9.

Immunogen	S100A9 (AAH47681, 1 a.a. ~ 114 a.a) full-length recombinant protein with GST tag. MW of the GST tag alone is 26 KDa.
Sequence	MTCKMSQLERNIETIINTFHQYSVKLGHPDTLNQGEFKELVRKDLQNFLKKENRNEKVIEHIMEDLD TNADKQLSFEEFIMLMARLTWASHEKMHEGDEGPGHHHKPGLGEGTP
Host	Mouse
Reactivity	Human
Isotype	IgG1 Kappa
Quality Control Testing	Antibody Reactive Against Recombinant Protein. Western Blot detection against Immunogen (38.28 KDa) .
Storage Buffer	In 1x PBS, pH 7.4
Storage Instruction	Store at -20°C or lower. Aliquot to avoid repeated freezing and thawing.

Applications

- Western Blot (Tissue lysate)

S100A9 monoclonal antibody (M11), clone 4G9. Western Blot analysis of S100A9 expression in human kidney.

[Protocol Download](#)

- Western Blot (Recombinant protein)

[Protocol Download](#)

- Sandwich ELISA (Recombinant protein)

Detection limit for recombinant GST tagged S100A9 is 0.03 ng/ml as a capture antibody.

[Protocol Download](#)

- ELISA

Gene Info — S100A9

Entrez GeneID	6280
GeneBank Accession#	BC047681
Protein Accession#	AAH47681

Gene Name	S100A9
Gene Alias	60B8AG, CAGB, CFAG, CGLB, L1AG, LIAG, MAC387, MIF, MRP14, NIF, P14
Gene Description	S100 calcium binding protein A9
Omim ID	123886
Gene Ontology	Hyperlink
Gene Summary	The protein encoded by this gene is a member of the S100 family of proteins containing 2 EF-hand calcium-binding motifs. S100 proteins are localized in the cytoplasm and/or nucleus of a wide range of cells, and involved in the regulation of a number of cellular processes such as cell cycle progression and differentiation. S100 genes include at least 13 members which are located as a cluster on chromosome 1q21. This protein may function in the inhibition of casein kinase and altered expression of this protein is associated with the disease cystic fibrosis. [provided by RefSeq]
Other Designations	OTTHUMP00000015331 S100 calcium-binding protein A9 S100 calcium-binding protein A9 (calgranulin B) calgranulin B

Publication Reference

- [S100A9+ MDSC and TAM-mediated EGFR-TKI resistance in lung adenocarcinoma: the role of RELB.](#)

Feng PH, Yu CT, Chen KY, Luo CS, Wu SM, Liu CY, Kuo LW, Chan YF, Chen TT, Chang CC, Lee CN, Chuang HC, Lin CF, Han CL, Lee WH, Lee KY.

Oncotarget 2018 Jan; 9(7):7631.

Application: Flow Cyt, Human, Peripheral blood mononuclear cells (PBMCs)

- [CD14\(+\)S100A9\(+\) monocytic myeloid-derived suppressor cells and their clinical relevance in non-small cell lung cancer.](#)

Feng PH, Lee KY, Chang YL, Chan YF, Kuo LW, Lin TY, Chung FT, Kuo CS, Yu CT, Lin SM, Wang CH, Chou CL, Huang CD, Kuo HP.

American Journal of Respiratory and Critical Care Medicine 2012 Nov; 186(10):1025.

Application: IF, Human, CD11b+CD14+ cells

Disease

- [Dermatitis](#)
- [Genetic Predisposition to Disease](#)
- [Kidney Calculi](#)