

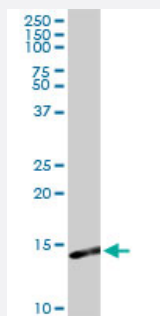
MaxPab®

# S100A9 purified MaxPab rabbit polyclonal antibody (D01P)

Catalog # H00006280-D01P

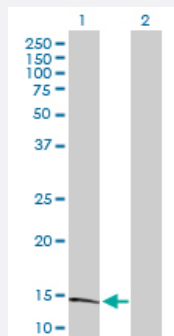
Size 100 ug

## Applications



### Western Blot (Tissue lysate)

S100A9 MaxPab rabbit polyclonal antibody. Western Blot analysis of S100A9 expression in human spleen.



### Western Blot (Transfected lysate)

Western Blot analysis of S100A9 expression in transfected 293T cell line ([H00006280-T02](#)) by S100A9 MaxPab polyclonal antibody.

Lane 1: S100A9 transfected lysate(13.20 KDa).

Lane 2: Non-transfected lysate.

## Specification

Product Description	Rabbit polyclonal antibody raised against a full-length human S100A9 protein.
Immunogen	S100A9 (NP_002956.1, 1 a.a. ~ 114 a.a) full-length human protein.
Sequence	MTCKMSQLERNIETIINTFHQYSVKLGHPDTLNQGEFKELVRKDLQNFLKKENKNEKVIEHIMEDLD TNADKQLSFEEFIMLMARLTWASHEKMHEGDEGPGHHHKPGLGEGTP
Host	Rabbit
Reactivity	Human
Quality Control Testing	Antibody reactive against mammalian transfected lysate.

**Storage Buffer**

In 1x PBS, pH 7.4

**Storage Instruction**

Store at -20°C or lower. Aliquot to avoid repeated freezing and thawing.

## Applications

- Western Blot (Tissue lysate)

S100A9 MaxPab rabbit polyclonal antibody. Western Blot analysis of S100A9 expression in human spleen.

[Protocol Download](#)

- Western Blot (Transfected lysate)

Western Blot analysis of S100A9 expression in transfected 293T cell line ([H00006280-T02](#)) by S100A9 MaxPab polyclonal antibody.

Lane 1: S100A9 transfected lysate(13.20 KDa).

Lane 2: Non-transfected lysate.

[Protocol Download](#)

## Gene Info — S100A9

**Entrez GeneID**[6280](#)**GeneBank Accession#**[NM\\_002965.2](#)**Protein Accession#**[NP\\_002956.1](#)**Gene Name**

S100A9

**Gene Alias**

60B8AG, CAGB, CFAG, CGLB, L1AG, LIAG, MAC387, MIF, MRP14, NIF, P14

**Gene Description**

S100 calcium binding protein A9

**Omim ID**[123886](#)**Gene Ontology**[Hyperlink](#)**Gene Summary**

The protein encoded by this gene is a member of the S100 family of proteins containing 2 EF-hand calcium-binding motifs. S100 proteins are localized in the cytoplasm and/or nucleus of a wide range of cells, and involved in the regulation of a number of cellular processes such as cell cycle progression and differentiation. S100 genes include at least 13 members which are located as a cluster on chromosome 1q21. This protein may function in the inhibition of casein kinase and altered expression of this protein is associated with the disease cystic fibrosis. [provided by RefSeq]

**Other Designations**

OTTHUMP00000015331|S100 calcium-binding protein A9|S100 calcium-binding protein A9 (calgranulin B)|calgranulin B

**Publication Reference**

- [Methods for predicting rheumatoid arthritis treatment response.](#)

Olivier Vittecoq, Thierry Lequerre, Pascal Cosette, Olivier Boyer, Xavier Le Loet, Julie Hardouin, Antoine Obry.

United States Patent Application Publication 2016 May; [Epub].

Application: ELISA, Human, Serum

- [Myeloid-related protein-14 contributes to protective immunity in gram-negative pneumonia derived sepsis.](#)

Achouiti A, Vogl T, Urban CF, Röhm M, Hommes TJ, van Zoelen MA, Florquin S, Roth J, van 't Veer C, de Vos AF, van der Poll T.

PLoS Pathogens 2012 Oct; 8(10):e1002987.

Application: Func, Human, Human neutrophils

- [Restoration of anti-Aspergillus defense by neutrophil extracellular traps in human chronic granulomatous disease after gene therapy is calprotectin-dependent.](#)

Bianchi M, Niemiec MJ, Siler U, Urban CF, Reichenbach J.

J Allergy Clin Immunol 2011 Mar; 127:1243.

Application: Incubated, Recombinant protein

**Disease**

- [Dermatitis](#)
- [Genetic Predisposition to Disease](#)
- [Kidney Calculi](#)