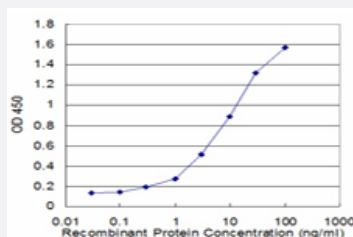


S100A8 monoclonal antibody (M02), clone 1B3

Catalog # H00006279-M02

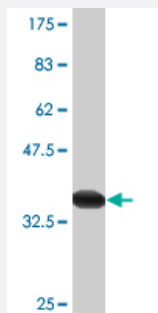
Size 100 ug

Applications



Sandwich ELISA (Recombinant protein)

Detection limit for recombinant GST tagged S100A8 is approximately 0.3ng/ml as a capture antibody.



Western Blot detection against Immunogen (35.97 KDa) .

Specification

Product Description

Mouse monoclonal antibody raised against a full-length recombinant S100A8.

Immunogen

S100A8 (AAH05928.1, 1 a.a. ~ 93 a.a) full-length recombinant protein with GST tag. MW of the GST tag alone is 26 KDa.

Sequence

MLTELEKALNSIIDVYHKYSLIKGNFHAVYRDDLKLLKETPCQYRKKGADVWFKELDINTDGAVNF
QEFLILVIKMGVAAHKKSHKE

Host

Mouse

Reactivity

Human

Isotype

IgG2a Kappa

Quality Control Testing

Antibody Reactive Against Recombinant Protein.
Western Blot detection against Immunogen (35.97 KDa) .

Storage Buffer

In 1x PBS, pH 7.4

Storage Instruction

Store at -20°C or lower. Aliquot to avoid repeated freezing and thawing.

Applications

- Western Blot (Recombinant protein)

[Protocol Download](#)

- Sandwich ELISA (Recombinant protein)

Detection limit for recombinant GST tagged S100A8 is approximately 0.3ng/ml as a capture antibody.

[Protocol Download](#)

- ELISA

Gene Info — S100A8

Entrez GeneID

[6279](#)

GeneBank Accession#

[BC005928](#)

Protein Accession#

[AAH05928.1](#)

Gene Name

S100A8

Gene Alias

60B8AG, CAGA, CFAG, CGLA, CP-10, L1Ag, MA387, MIF, MRP8, NIF, P8

Gene Description

S100 calcium binding protein A8

Omim ID

[123885](#)

Gene Ontology

[Hyperlink](#)

Gene Summary

The protein encoded by this gene is a member of the S100 family of proteins containing 2 EF-hand calcium-binding motifs. S100 proteins are localized in the cytoplasm and/or nucleus of a wide range of cells, and involved in the regulation of a number of cellular processes such as cell cycle progression and differentiation. S100 genes include at least 13 members which are located as a cluster on chromosome 1q21. This protein may function in the inhibition of casein kinase and as a cytokine. Altered expression of this protein is associated with the disease cystic fibrosis. [provided by RefSeq]

Other Designations

OTTHUMP00000015329|OTTHUMP00000015330|S100 calcium-binding protein A8|S100 calcium-binding protein A8 (calgranulin A)|calgranulin A|cystic fibrosis antigen

Disease

- [Aggressive Periodontitis](#)
- [Dermatitis](#)
- [Genetic Predisposition to Disease](#)
- [Kidney Calculi](#)
- [Periodontitis](#)