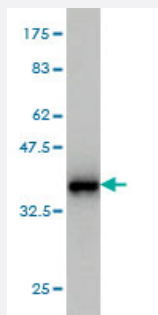


S100A8 monoclonal antibody (M01), clone 2H2

Catalog # H00006279-M01

Size 100 ug

Applications



Western Blot detection against Immunogen (35.97 KDa) .

Specification

Product Description	Mouse monoclonal antibody raised against a full length recombinant S100A8.
Immunogen	S100A8 (AAH05928.1, 1 a.a. ~ 93 a.a) full-length recombinant protein with GST tag. MW of the GST tag alone is 26 KDa.
Sequence	MLTELEKALNSIIDVYHKYSLIKGNFHAVYRDDLKLLLETECPQYRKKGADVWFKELDINTDGAVNFQEFLILVIKMGVAAHKKSHKEESHKE
Host	Mouse
Reactivity	Human
Isotype	IgG2a Kappa
Quality Control Testing	Antibody Reactive Against Recombinant Protein. Western Blot detection against Immunogen (35.97 KDa) .
Storage Buffer	In 1x PBS, pH 7.4
Storage Instruction	Store at -20°C or lower. Aliquot to avoid repeated freezing and thawing.

Applications

- Western Blot (Recombinant protein)

[Protocol Download](#)

- ELISA

Gene Info — S100A8

Entrez GeneID [6279](#)

GeneBank Accession# [BC005928](#)

Protein Accession# [AAH05928.1](#)

Gene Name S100A8

Gene Alias 60B8AG, CAGA, CFAG, CGLA, CP-10, L1Ag, MA387, MIF, MRP8, NIF, P8

Gene Description S100 calcium binding protein A8

Omim ID [123885](#)

Gene Ontology [Hyperlink](#)

Gene Summary The protein encoded by this gene is a member of the S100 family of proteins containing 2 EF-hand calcium-binding motifs. S100 proteins are localized in the cytoplasm and/or nucleus of a wide range of cells, and involved in the regulation of a number of cellular processes such as cell cycle progression and differentiation. S100 genes include at least 13 members which are located as a cluster on chromosome 1q21. This protein may function in the inhibition of casein kinase and as a cytokine. Altered expression of this protein is associated with the disease cystic fibrosis. [provided by RefSeq]

Other Designations OTTHUMP00000015329|OTTHUMP00000015330|S100 calcium-binding protein A8|S100 calcium-binding protein A8 (calgranulin A)|calgranulin A|cystic fibrosis antigen

Publication Reference

- [S100A8 as potential salivary biomarker of oral squamous cell carcinoma using nanoLC-MS/MS.](#)

Jou YJ, Hua CH, Lin CD, Lai CH, Huang SH, Tsai MH, Kao JY, Lin CW.

Clinica Chimica Acta 2014 May; 436C:121.

Application: IHC-P, WB, Human, Human oral squamous cell carcinoma, Human saliva

Disease

- [Aggressive Periodontitis](#)
- [Dermatitis](#)
- [Genetic Predisposition to Disease](#)
- [Kidney Calculi](#)
- [Periodontitis](#)