

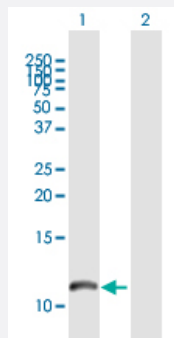
MaxPab®

S100A8 purified MaxPab mouse polyclonal antibody (B02P)

Catalog # H00006279-B02P

Size 50 ug

Applications



Western Blot (Transfected lysate)

Western Blot analysis of S100A8 expression in transfected 293T cell line ([H00006279-T04](#)) by S100A8 MaxPab polyclonal antibody.

Lane 1: S100A8 transfected lysate(10.80 KDa).

Lane 2: Non-transfected lysate.

Specification

Product Description	Mouse polyclonal antibody raised against a full-length human S100A8 protein.
Immunogen	S100A8 (NP_002955.2, 1 a.a. ~ 93 a.a) full-length human protein.
Sequence	MLTELEKALNSIIDVYHKYSLIKGNFHAVYRDDLKLLKETCPQYIRKKGADVWFKELDINTDGAVNFQEFLLVIKMGVAAHKKSHKE
Host	Mouse
Reactivity	Human
Quality Control Testing	Antibody reactive against mammalian transfected lysate.
Storage Buffer	In 1x PBS, pH 7.4
Storage Instruction	Store at -20°C or lower. Aliquot to avoid repeated freezing and thawing.

Applications

- Western Blot (Transfected lysate)

Western Blot analysis of S100A8 expression in transfected 293T cell line ([H00006279-T04](#)) by S100A8 MaxPab polyclonal antibody.

Lane 1: S100A8 transfected lysate(10.80 KDa).

Lane 2: Non-transfected lysate.

[Protocol Download](#)

Gene Info — S100A8

Entrez GeneID [6279](#)

GeneBank Accession# [NM_002964.3](#)

Protein Accession# [NP_002955.2](#)

Gene Name S100A8

Gene Alias 60B8AG, CAGA, CFAG, CGLA, CP-10, L1Ag, MA387, MIF, MRP8, NIF, P8

Gene Description S100 calcium binding protein A8

Omim ID [123885](#)

Gene Ontology [Hyperlink](#)

Gene Summary The protein encoded by this gene is a member of the S100 family of proteins containing 2 EF-hand calcium-binding motifs. S100 proteins are localized in the cytoplasm and/or nucleus of a wide range of cells, and involved in the regulation of a number of cellular processes such as cell cycle progression and differentiation. S100 genes include at least 13 members which are located as a cluster on chromosome 1q21. This protein may function in the inhibition of casein kinase and as a cytokine. Altered expression of this protein is associated with the disease cystic fibrosis. [provided by RefSeq]

Other Designations OTTHUMP00000015329|OTTHUMP00000015330|S100 calcium-binding protein A8|S100 calcium-binding protein A8 (calgranulin A)|calgranulin A|cystic fibrosis antigen

Disease

- [Aggressive Periodontitis](#)
- [Dermatitis](#)
- [Genetic Predisposition to Disease](#)

- [Kidney Calculi](#)
- [Periodontitis](#)